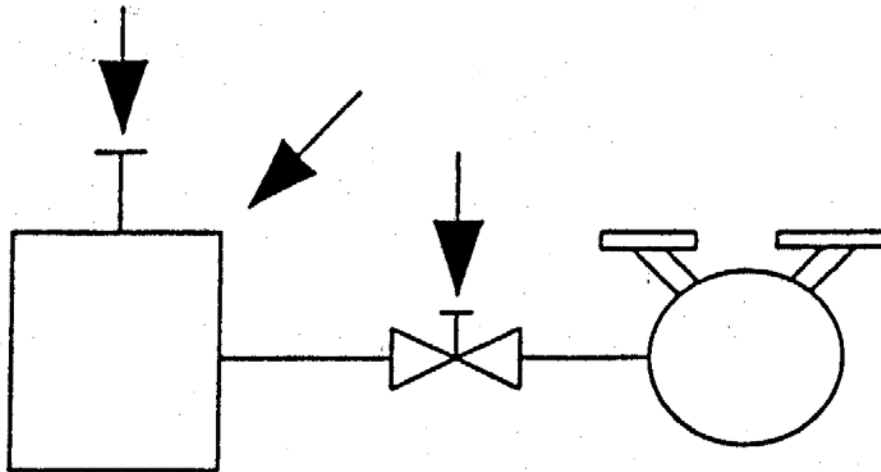




VACUUM PUMP SIZING



The main function of a vacuum pump is to either handle air leakage and/or non-condensables from the process, or to evacuate a chamber from atmospheric pressures to a certain vacuum level. Often the air or non-condensable will be saturated with water or other process vapors.

CALCULATION AND MEASUREMENT OF INLET CAPACITY

**SCFM = Capacity measured at standard conditions
(14.7 psia – 29.92” Hg – 760 Torr at 68° F)**

**ACFM = Capacity measured at inlet conditions
= SCFM X 760 / P X T / 530**

ACFM = W X 359 / MW X 760 / P X T / 492