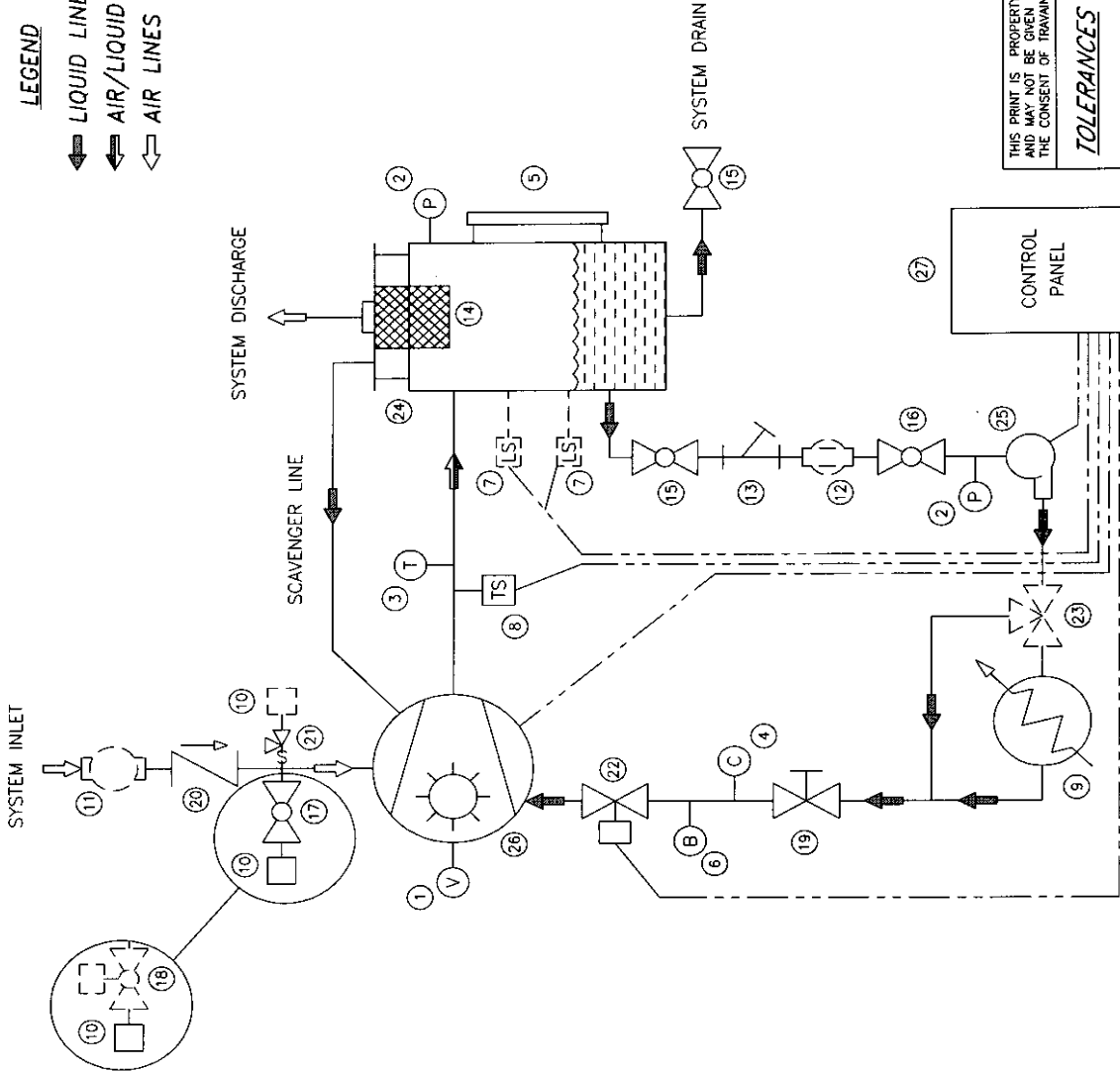
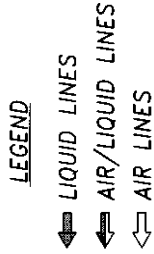


**BILL OF MATERIALS**

ITEM	DESCRIPTION
1	VACUUM GAUGE (STD)
2	PRESSURE GAUGE (STD)
3	TEMPERATURE GAUGE (STD)
4	COMPOUND GAUGE (STD)
5	LEVEL GAUGE (STD)
6	BULLSEYE GAUGE (STD)
7	LEVEL SWITCH, HIGH AND LOW (OPT)
8	TEMPERATURE SWITCH (STD)
9	HEAT EXCHANGER AIR OR WATER COOLED (STD)
10	FILTER SILENCER (STD)
11	INLET FILTER (OPT)
12	SPIN-ON OIL FILTER (OPT)
13	Y-STRAINER (STD)
14	SEPARATOR ELEMENT (STD)
15	BALL VALVE (STD)
16	BALL VALVE STRAINER ISOLATOR (STD)
17	MANUAL UNLOADING VALVE (STD)
18	AUTOMATIC UNLOADING VALVE (OPT)
19	GLOBE VALVE (STD)
20	CHECK VALVE (STD)
21	VACUUM RELIEF VALVE (OPT)
22	SOLENOID VALVE (NOT USED WITH ITEM 22)
23	TEMPERATURE CONTROL VALVE (OPT)
24	SEPARATOR TANK (STD)
25	CIRCULATION PUMP (STD)
26	TRAVANI LIQUID RING VACUUM PUMP (STD)
27	CONTROL PANEL NEMA 12 (STD)



**NOTES:**

- ITEM #2, #4, #16, #19 AND #25 ARE USED ON TRO700-1000 SYSTEMS.



THIS PRINT IS PROPERTY OF TRAVANI PUMPS USA, INC. AND MAY NOT BE GIVEN TO ANY OTHER CONCERN WITHOUT THE CONSENT OF TRAVANI PUMPS USA, INC.	
S/N NO.	N/A
PART NO.	N/A
DWG BY: MW	CHK BY: SG
DATE: 8/13/01	SCALE: N/A
WEIGHT: -	
UNLESS OTHERWISE SPECIFIED IN DRAWING	
<b>TOLERANCES</b>	
DECIMAL	± .0625"
FRACTIONAL	± 1/8"
ANGULAR	± 0° 30' 00"

DESCRIPTION	FLOW DIAGRAM FOR OILSEALED DYNASEAL SYSTEMS
MODEL NO.	VARIOUS
DWG NO.	0108134-D

REV	DESCRIPTION	DATE	APPR
REVISIONS			