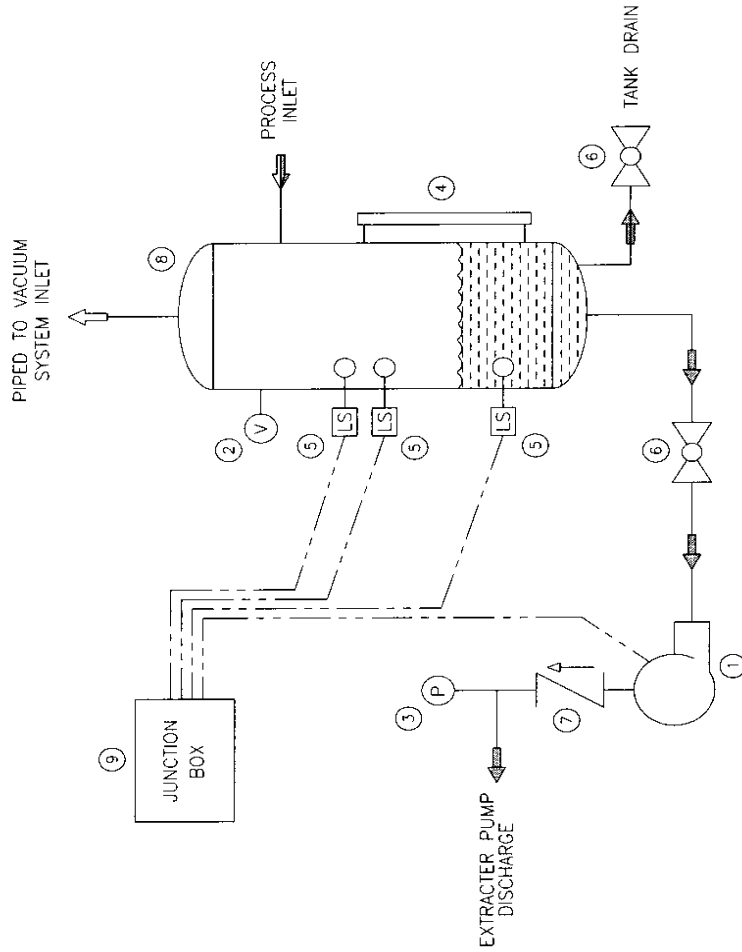


BILL OF MATERIALS	
ITEM	DESCRIPTION
1	EXTRACTION PUMP WITH ELECTRIC MOTOR
2	VACUUM GAUGE
3	PRESSURE GAUGE
4	LEVEL GAUGE
5	LEVEL SWITCH, LOW/ HIGH/ HIGH-HIGH
6	ISOLATION BALL VALVE
7	CHECK HINGE VALVE
8	KNOCKOUT TANK
9	JUNCTION BOX



LEGEND

- ⇌ LIQUID LINES
- ⇐ AIR/LIQUID LINES
- ⇨ AIR LINES

THIS PRINT IS PROPERTY OF TRAVAINI PUMPS USA, INC. AND MAY NOT BE GIVEN TO ANY OTHER CONCERN WITHOUT THE CONSENT OF TRAVAINI PUMPS USA, INC.

TOLERANCES

DECIMAL ± .0625"
 FRACTIONAL ± 1/8"
 ANGULAR ± 0° 30' 00"

UNLESS OTHERWISE SPECIFIED IN DRAWING

TRAVAINI PUMPS USA
Liquid Ring & Rotary Vane Vacuum Pumps and Systems

DESCRIPTION: SOIL VAPOR EXTRACTION SYSTEM FLOW SCHEMATIC

MODEL NO.: VARIOUS DWG NO.: 0108311-B

S/N NO.	VARIOUS	
PART NO.	N/A	
DWG BY:	CHK BY:	DATE:
MW	SG	8/31/01
APPROVED BY:	TS	SCALE:
		NONE

REV	DESCRIPTION	DATE	APPR
REVISIONS			