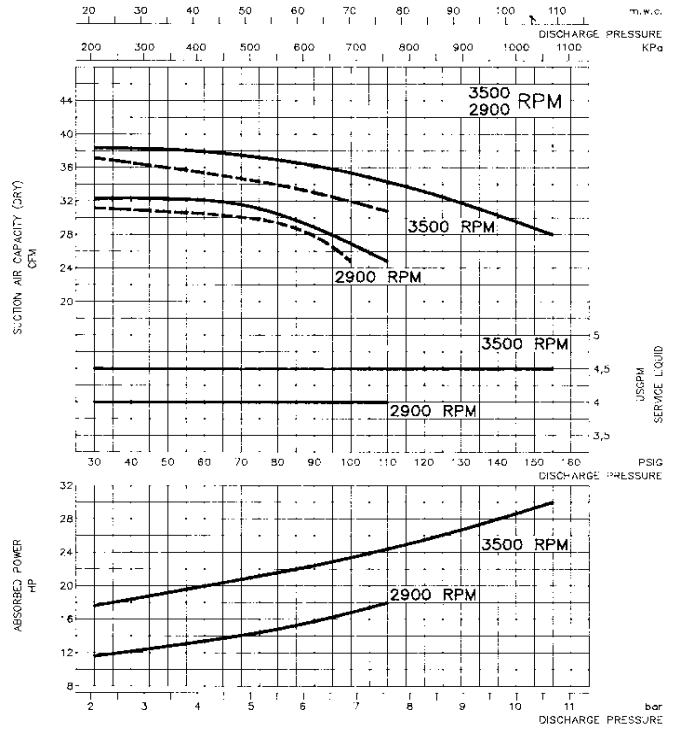


# High Pressure Liquid Ring Compressors Performance Data

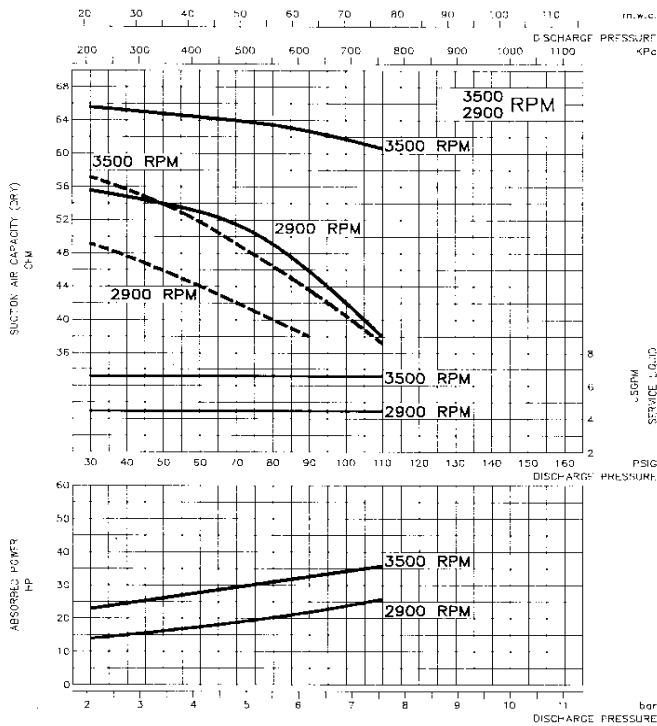
## DATA BASED ON:

- 60F° Sealing water
- 70F° Air inlet temperature
- 14.7 PSIA barometric pressure
- “GH” Construction
- - - “A3” Construction
- 10% Tolerance

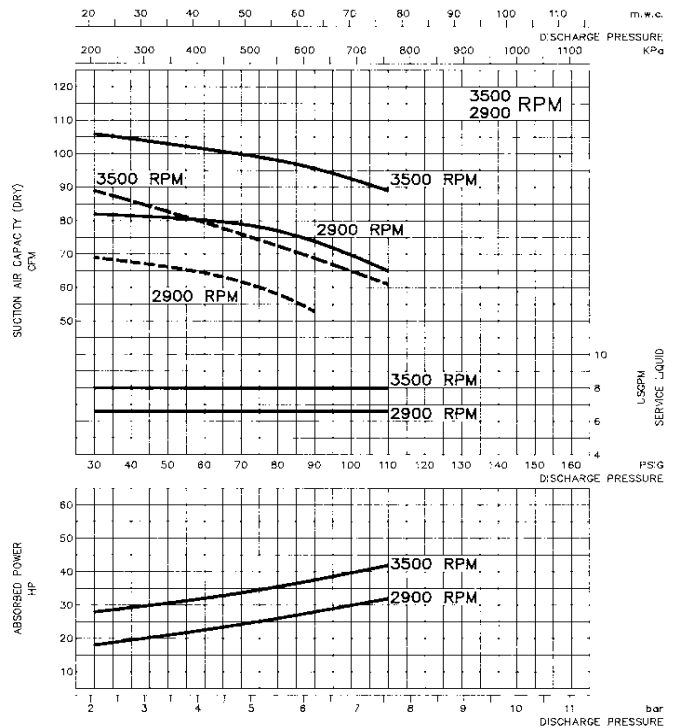
MODEL **SAOE3U**



MODEL **SAOG2D**



MODEL **SAOG2G**

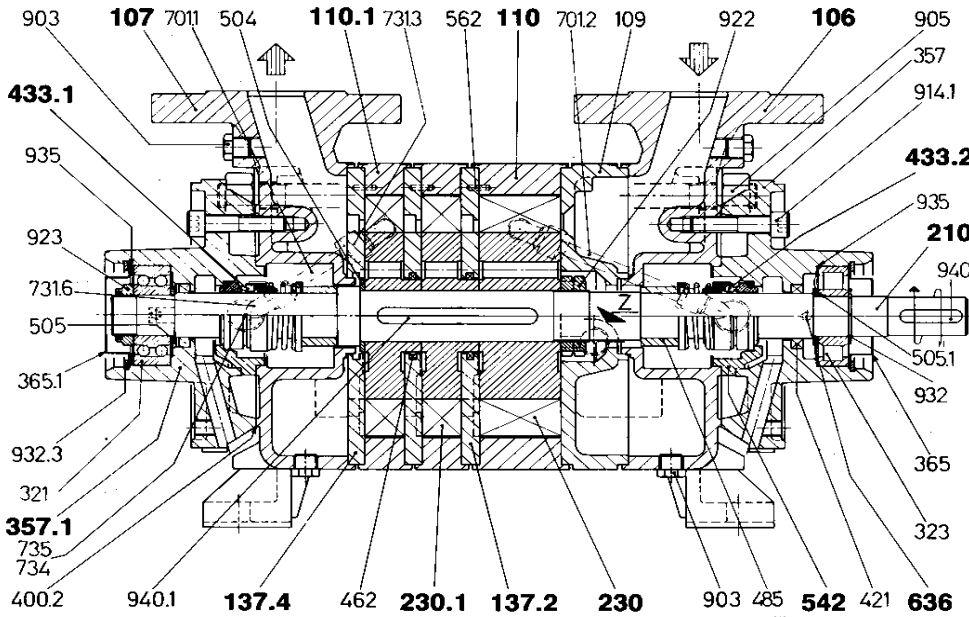


## MODEL DESIGNATION

<b>SA O G 2 G / C - GH</b>	
<b>SA</b> Double acting liquid ring compressor	<b>2</b> 2 = impeller number 3 =
<b>O</b> Design number	<b>G</b> D = 60 mm } Dimensions G = 90 mm } impeller U = 46 mm } 1 <sup>st</sup> stage
	<b>C</b> Type of seals on the shaft C = Mechanical seal B = Stuffing box
<b>G</b> E = $\varnothing$ 32 mm flange size G = $\varnothing$ 50 mm flange size	<b>GH</b> Materials of construction GH = } RA = } see table A3 = }

## TABLE FOR MATERIALS OF CONSTRUCTION

VDMA N°	DESCRIPTION	GH	RA	A3
106	SUCTION CASING	CAST IRON		
107	DISCHARGE CASING			
110	IMPELLER HOUSING			
137	PORT PLATE			
210	SHAFT	S.S. AISI 420		
230	IMPELLER	BRONZE	S.S. AISI 316	
357	BEARING HOUSING	CAST IRON		

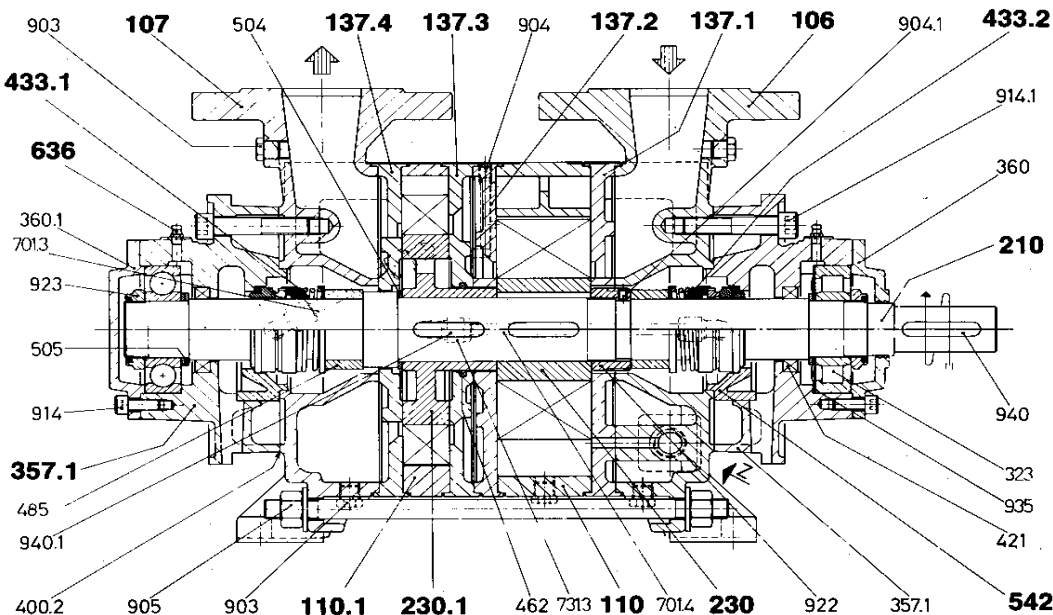


Typical sectional drawing with mechanical seal: compressor model SAO3U

## SPECIAL MATERIALS AVAILABLE UPON REQUEST

## PRINCIPAL COMPONENTS

ITEM N°	COMPONENTS
106	Suction casing
107	Discharge casing
110	Impeller casing
110.1	Impeller casing
137.1	Suction element
137.2	Discharge element
137.3	Suction element
137.4	Discharge element
210	Shaft
230	Impeller
230.1	Impeller
357.1	Bearing / seal housing
433.1	Mechanical seal
433.2	Mechanical seal
542	Seal bush
636	(S.S. AISI 316 construction only)
Z	Greaser
	Liquid supply inlet



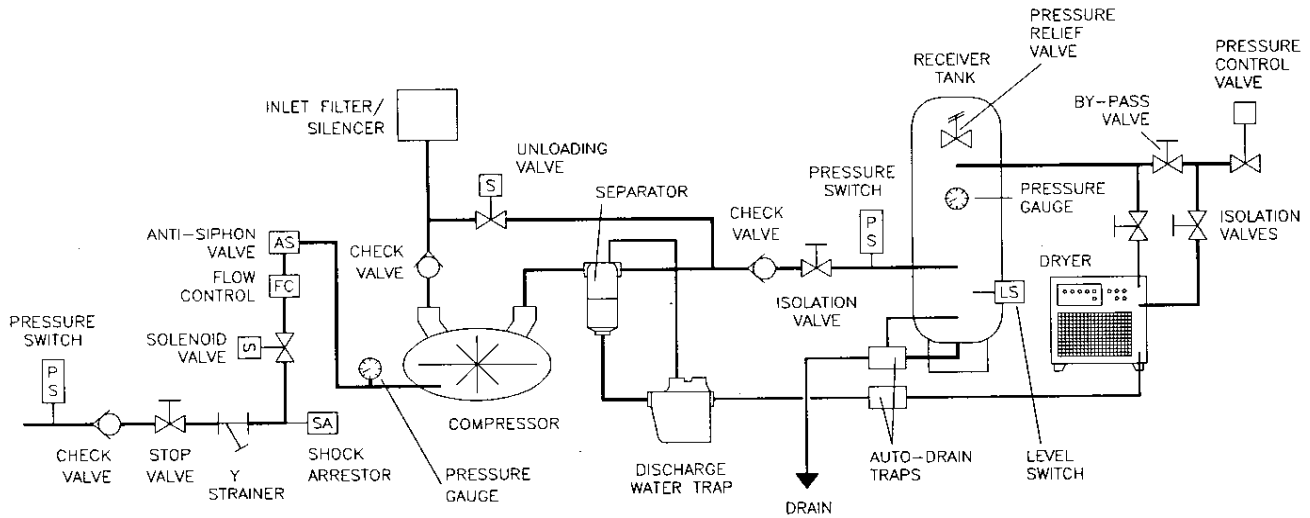
Typical sectional drawing with mechanical seal: compressor model SAOG2D



**TRAVAINI  
PUMPS USA**

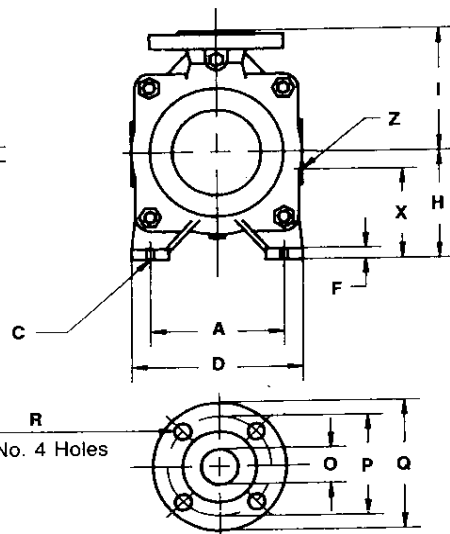
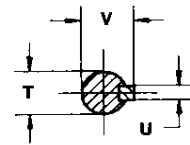
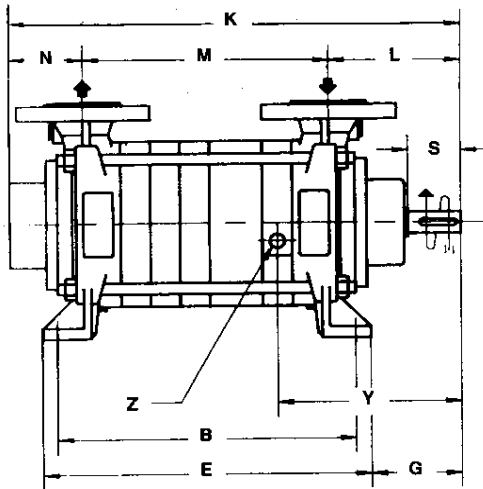
Liquid Ring & Rotary Vane Vacuum Pumps and System

# TYPICAL SCHEMATIC FOR MEDICAL AIR SYSTEMS



## BARESHAF CONSTRUCTION

OVERALL DIMENSIONS (inches and mm.)



**Z = SERVICE LIQUID CONNECTION**  
**Flanges drilled to ASA 150 RF**

COMPRESSOR MODEL	A	B	C	D	E	F	G	H	I	K	L	M	N	X	Y	Z	O	P	Q	R	S	T	U	V	Weight lbs kgs.	
<b>SAOE3U</b>	6.29 160	11.14 283	0.51 13	7.87 200	12.71 323	0.59 15	4.25 108	5.19 132	5.51 140	19.13 486	5.90 150	12.95 329	3.81 97	4.56 116		3/8"	1 1/4" 32	3.50 89	5.51 140	0.62 16	1.77 45	0.94 24	0.31 8	1.06 27	123 56	
<b>SAOG2D</b>		11.85 301			13.03 331					22.28 566		8.70 221			8.22 209		1/2"	2" 50	4.72 120	6.49 165	0.74 19	2.55 65	1.25 32	0.39 10	1.37 35	183 83
<b>SAOG2G</b>		13.03 331			14.21 361					23.46 596		9.88 251													190 86.5	

The above data is not binding.



Liquid Ring & Rotary Vane Vacuum Pumps and System