



Liquid Ring & Rotary Vane Vacuum Pumps and System

PVL150 - PVL150/B

The pump series:

- PVL150 final vacuum 0.5 Torr (absolute)

-PVL150/B final vacuum 7.5 Torr (absolute)

have a nominal capacity (60 Hz) of 103 ACFM.

They are lubricated, with oil recirculation system, rotary vane vacuum pumps.

They are suitable to evacuate closed systems or to operate at a constant vacuum within the following vacuum range:

-PVL150 from 0.5

to 300 Torr (absolute)

-PVL150/B from

7.5 to 650 torr (absolute)

They are complete with:

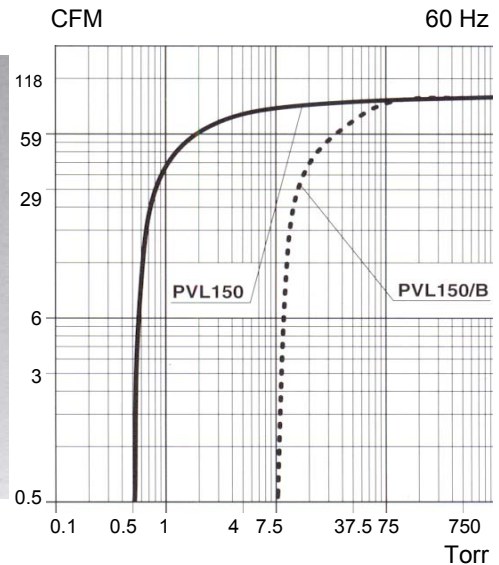
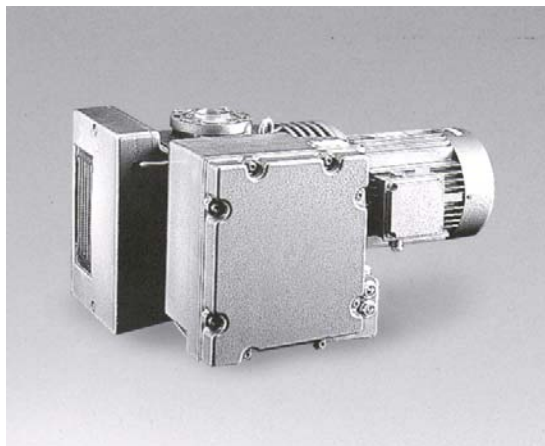
- inlet mesh filter

- check valve

- gas-ballast valve

		PVL150		PVL150/B
Nominal Capacity	ACFM	60 Hz	103	
Ultimate pressure (abs.)	Torr	0.5		7.5
RPM	min. ⁻¹	60 Hz	1700	
Motor power	HP	60 Hz	~3	5
Sound pressure level	dB(A)	60 Hz	72	
Water vapor tolerance	Torr	20		
Water vapor capacity	lb/h	6.6		
Total weight/without motor	lbs	60 Hz	~3	229/156
Oil charge	qt	2.5		

Technical data and curves according to Pneurop standard 6602 with gas-ballast valve in

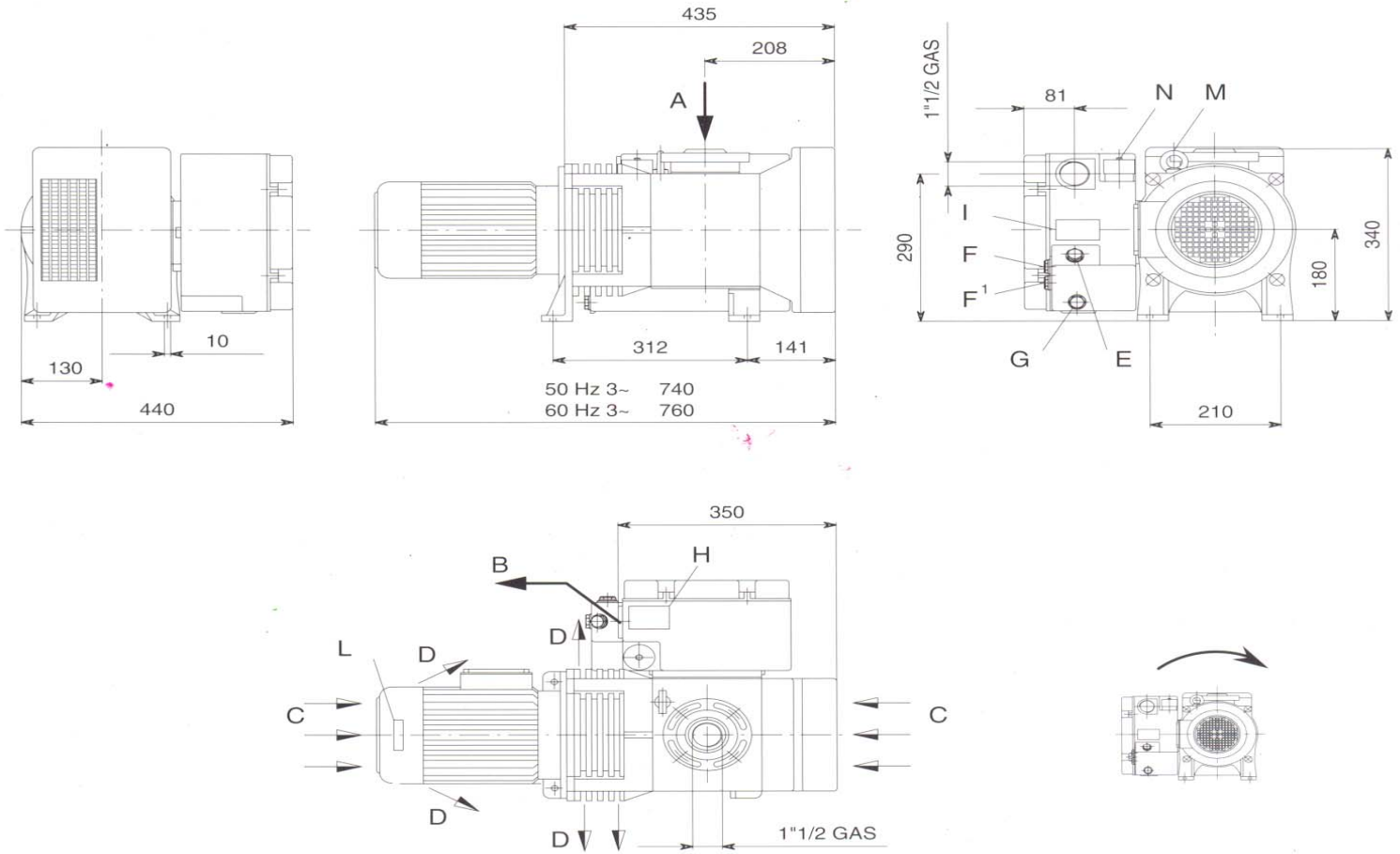


Applications:

Hospital Central Vacuum Systems
 Meat Packing
 Food Packing
 General Packing
 Vacuum Filling
 CNC Routers

Lab Systems
 Vacuum Forming
 Vacuum Holddown
 Printing
 Vacuum Laminations

PVL150 - PVL150/B



* Dimensions subject to changes depending on the motor brand

- A Inlet
- B Air outlet
- C Cooling air inlet
- D Cooling air outlet
- E Oil filling plug
- F Maximum oil level sight glass
- F¹ Minimum oil level sight glass
- G Oil discharge plug
- H Pump name plate
- I Oil plate
- L Rotation plate
- M Lifting eyebolt
- N Gas ballast valve

Our Other Products:

- Liquid Ring Vacuum Pumps:
3 CFM to 10,000 CFM
- Liquid Ring Compressors
up to 100 psig
- Heat Transfer Pumps
for hot thermal oils up to 600 deg. F

Systems:

- Package Vacuum Systems
with Partial or Total Recirculation
- Customer Engineered Vacuum Solutions