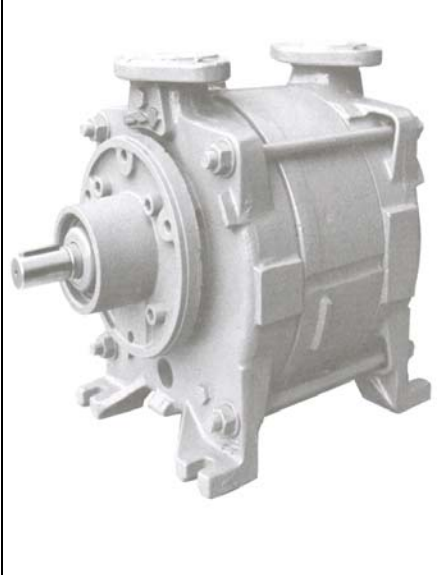


TRS 40

Single Stage Medium Vacuum Pumps

PERFORMANCE DATA	: From: 100 Torr	CAPACITY: 20 - 110 cfm
FEATURES	: Single-stage rotating pump with externally located bearings grease lubricated.	
SHAFT SEALING	: Mechanical seal - Double mechanical seal – Packing seal.	
OPTIONS	: Bareshaft pump - Coupled to electric motor on baseplate - Monoblock with electric motor.	



TECHNICAL DATA							
PUMP TYPE		TRSE 40-55		TRSC 40-100		TRSC 40-150	
Speed	RPM	1450	1750	1450	1750	1450	1750
Motor - installed power	HP	2	3	4	5	5	7.5
Avg. service liquid flow	GPM	2.9	2.9	3.5	3.8	4.2	0.42
Noise level at 150 Torr	dB(A)	66	68	67	69	67	69
Min. suction pressure	Torr	100	100	100	100	100	100

Pumps are provided with threaded connections for service liquid, pump draining and anticavitation valve & companion flanges.
Pumps are also provided, by request, with auxiliary threaded connections, flanged air-liquid separator tank, non return valve, vacuum relief valve, valve to control the flow of the liquid supply, vacuum gauges, pressure gauges and compound gauges. We can also provide information on our water sealed and oil sealed systems.
For more detailed information please contact our Sales Office.

Example for Model Designation	
<u>T R S E 40 - 100 / C - M / GH</u>	
T	Travaini Pump USA construction
R	Liquid Ring Pump
S	Single stage pump for medium vacuum
E	Design number
40	Flange size (mm)
100	Nominal capacity (m ³ /h)
C	Shaft sealing C = Mechanical seal C2 = Double mechanical seal B = Packing seal
M	Close-coupled construction with lantern (by request)
GH	Materials of construction GH-F-RA-A3 = See table

Standard Materials of Construction					
Part No.	Description	GH	F	RA	A3
106	Suction casing	Cast Iron			
107	Discharge casing				
110	Impeller housing	Carbon Steel			
210	Shaft	Stainless Steel AISI 420		Stainless Steel AISI 316	
147	Manifold	Steel			
357	Bearing housing mech. seal	Cast Iron			
230	Impeller	Bronze	Ductile Iron	Stainless Steel AISI 316	

Special Materials Available Upon Request

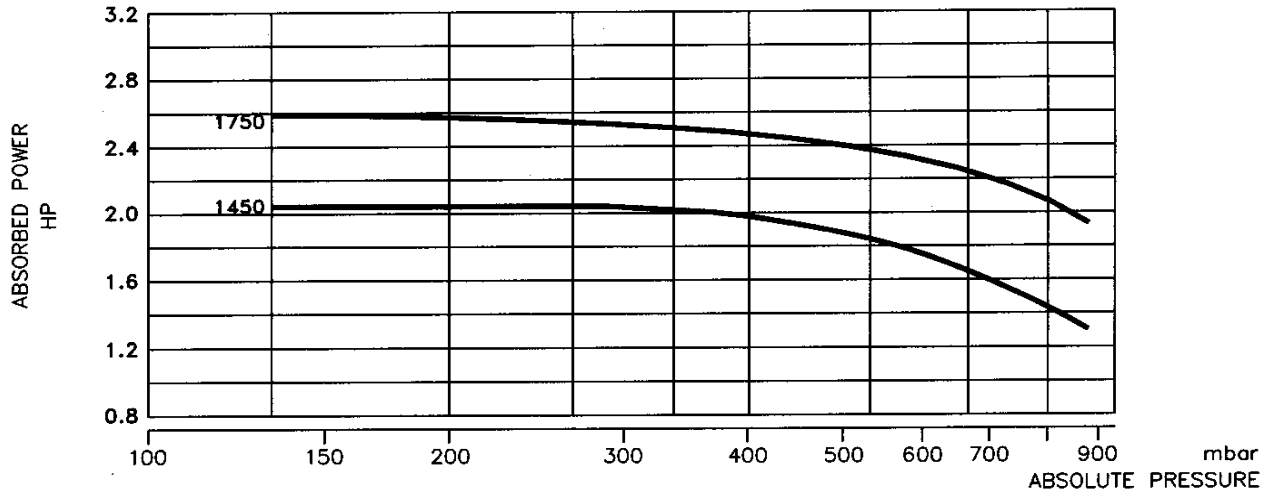
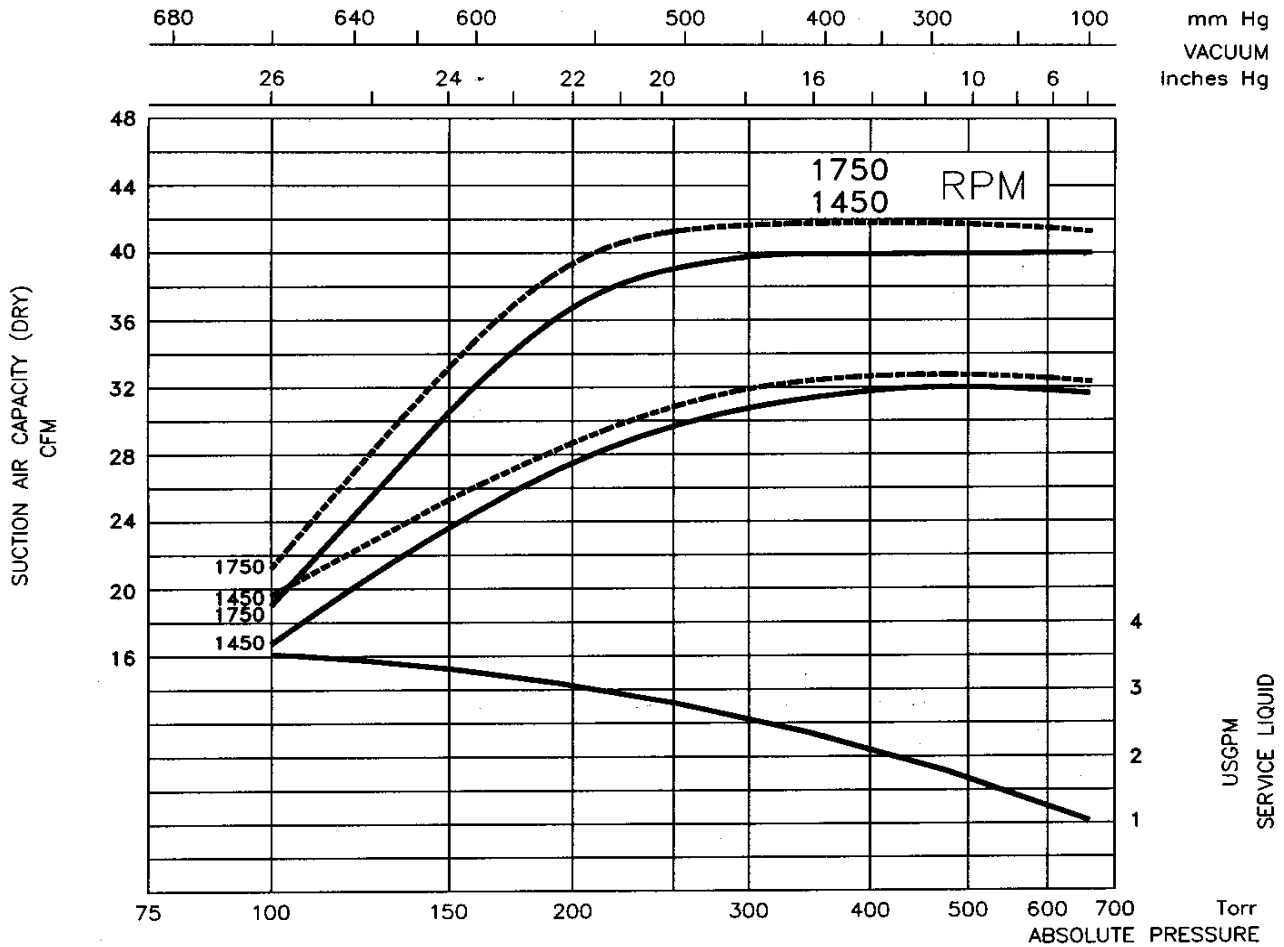
Indicative table: for further information please consult our Sales Office



Liquid Ring & Rotary Vane Vacuum Pumps and System

DATA BASED ON :
 DRY AIR AT 68 °F - 20 °C
 SATURATED AIR AT 68 °F - 20 °C
 SERVICE LIQUID WATER
 SERVICE LIQUID TEMPERATURE 59 °F - 15 °C
 DISCHARGE PRESSURE 1013 mbar
 S.S. PUMPS CAPACITY : -10%
 Tol.: 10%

PERFORMANCE DATA
 LIQUID RING VACUUM PUMP
 PUMP MODEL
TRSE 40-55



Capacity for A3 construction = -10%

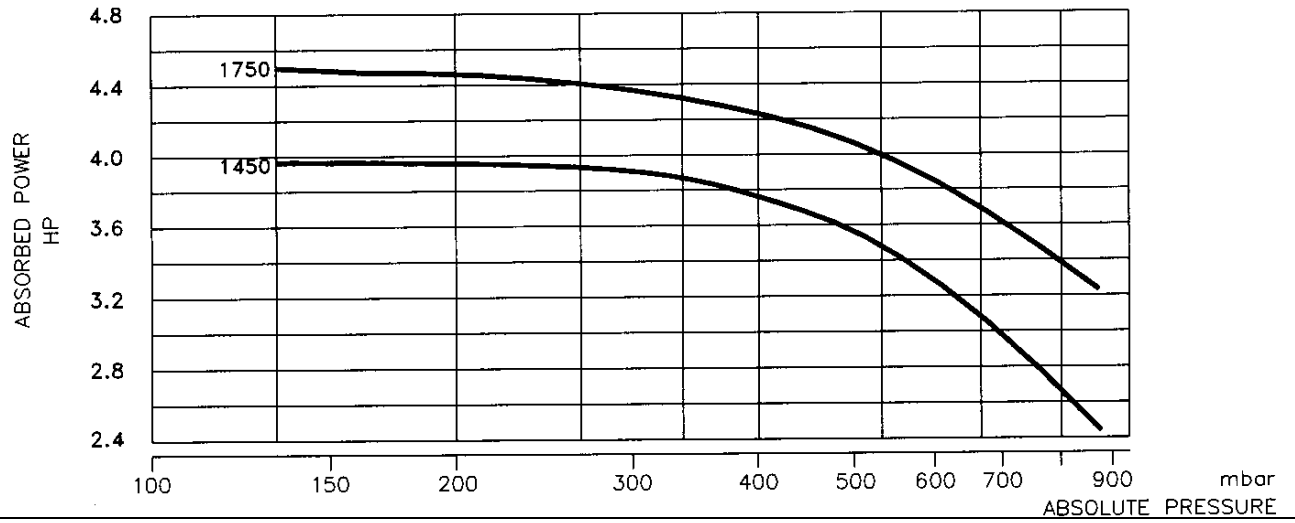
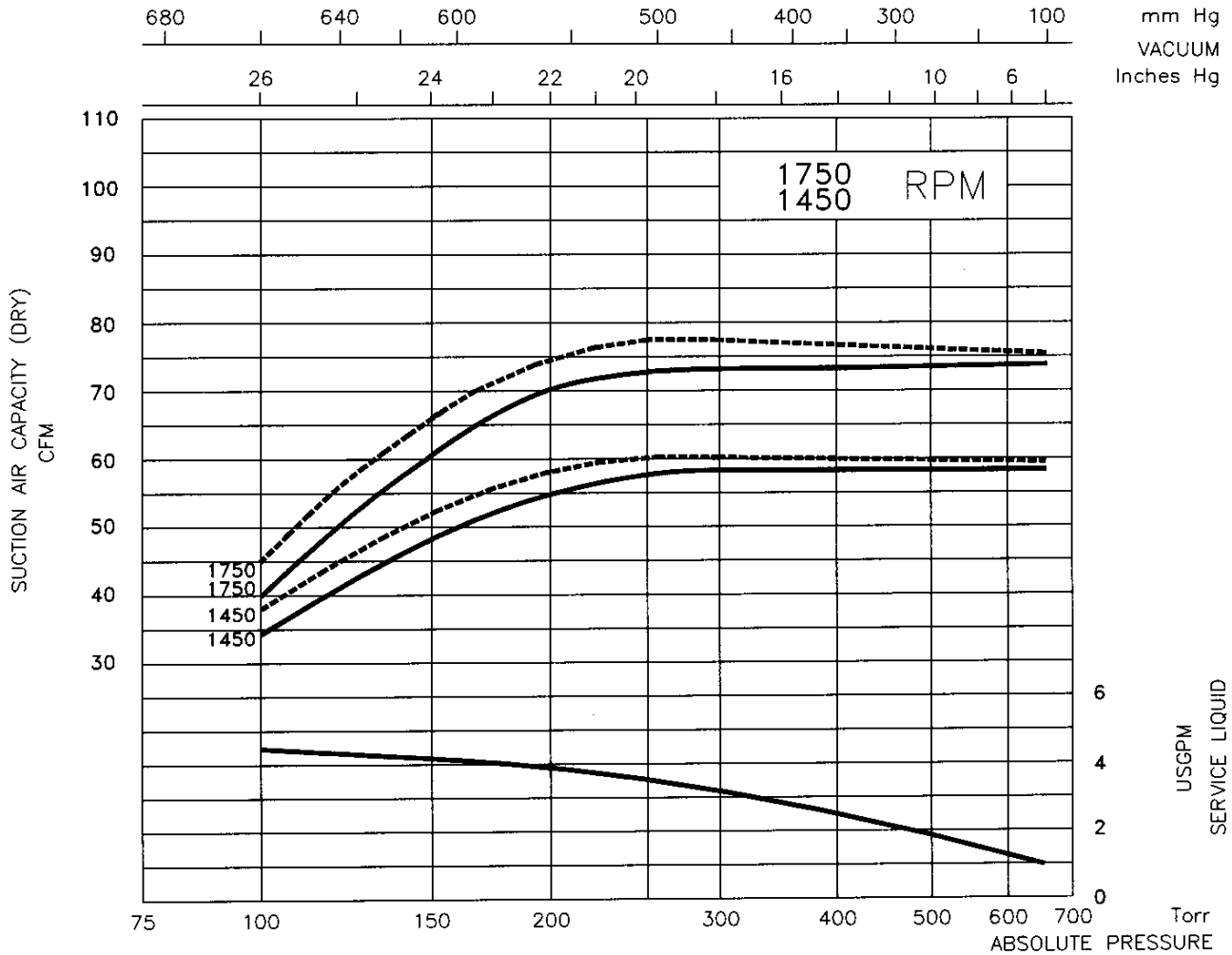
The pump series TRV can operate as compressors at a pressure of 2 bar maximum higher than suction pressure. For working performances contact our Sales Office.



Liquid Ring & Rotary Vane Vacuum Pumps and System

DATA BASED ON :
 DRY AIR AT 68 °F - 20 °C
 SATURATED AIR AT 68 °F - 20 °C
 SERVICE LIQUID WATER
 SERVICE LIQUID TEMPERATURE 59 °F - 15 °C
 DISCHARGE PRESSURE 1013 mbar
 S.S. PUMPS
 CAPACITY : -10%
 Tol.: 10%

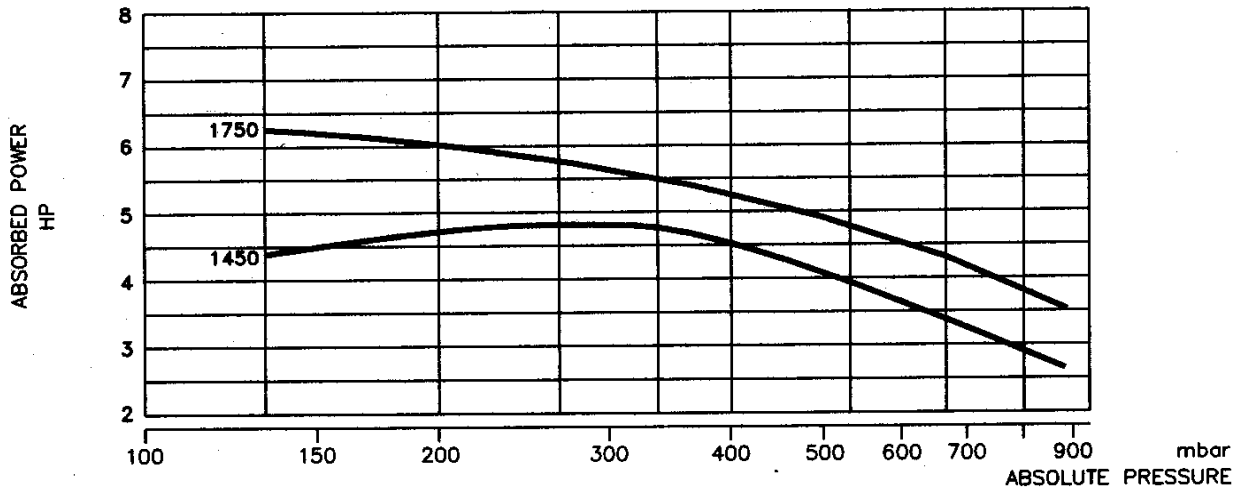
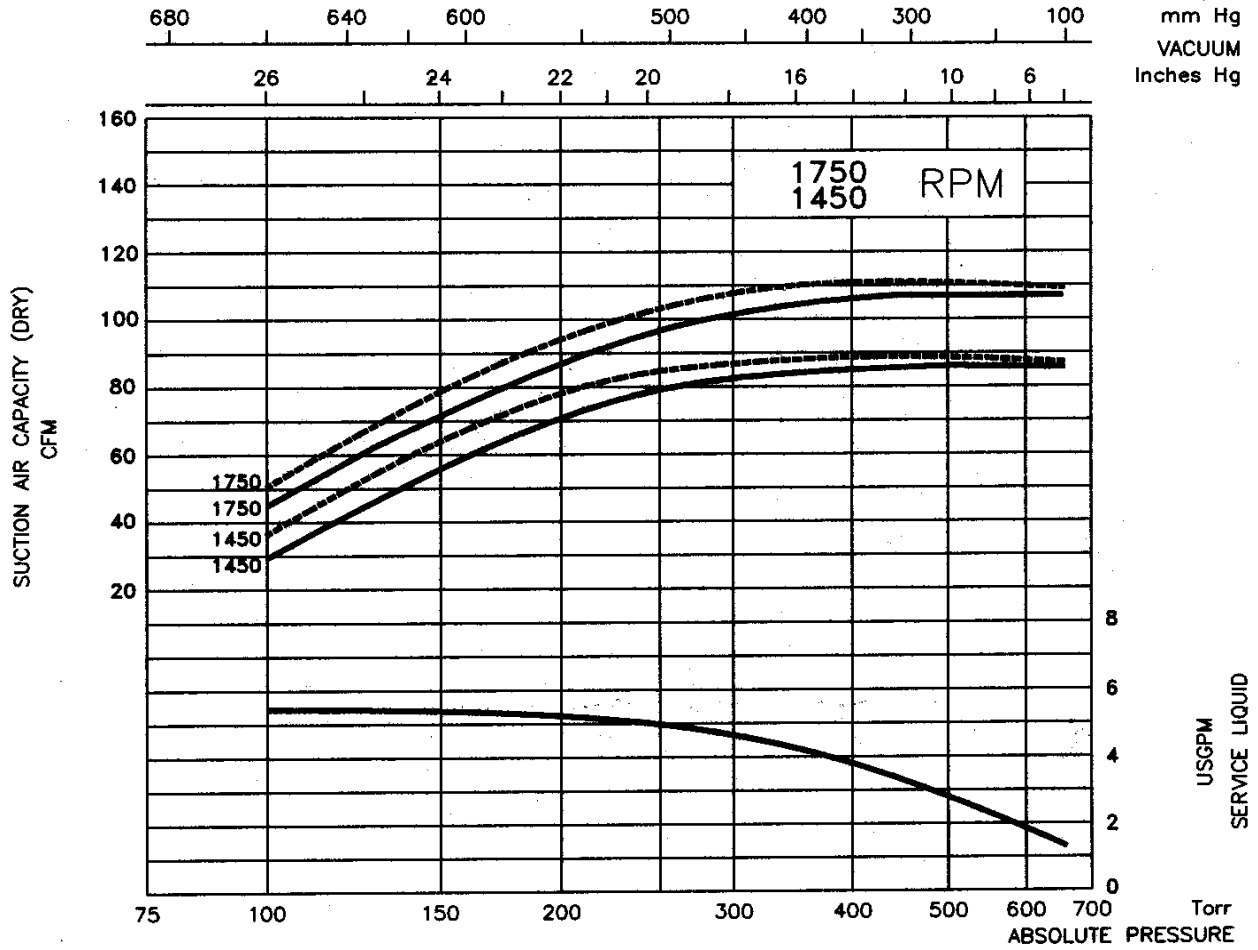
PERFORMANCE DATA
 LIQUID RING VACUUM PUMP
 PUMP MODEL
TRSC 40-100



DATA BASED ON :
 DRY AIR AT 68 °F - 20 °C
 SATURATED AIR AT 68 °F - 20 °C
 SERVICE LIQUID WATER
 SERVICE LIQUID TEMPERATURE 59 °F - 15 °C
 DISCHARGE PRESSURE 1013 mbar

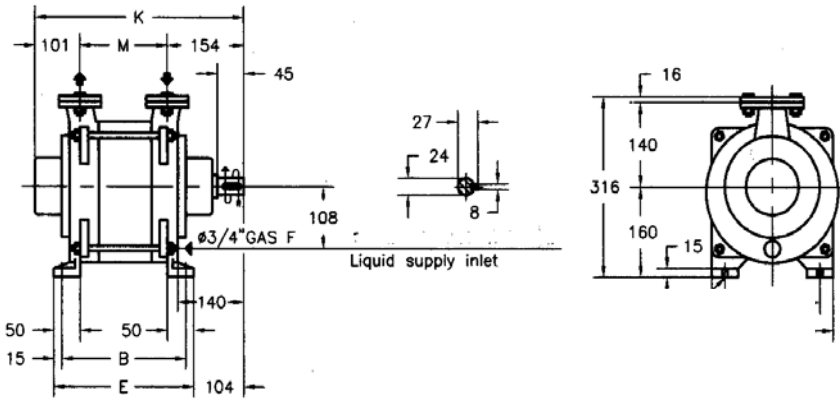
S.S. PUMPS
 CAPACITY : -10%
 Tol.: 10%

PERFORMANCE DATA
 LIQUID RING VACUUM PUMP
 PUMP MODEL
TRSC 40-150



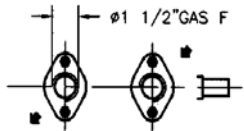
TRSE 40/C

Bareshaft Construction with Mechanical Seal



Pump Type	B	E	M	K	Weight lbs.
TRSE 40-55/C	180	210	110	365	75

Note:
Dimensions in mm. ----- = inches
25.4



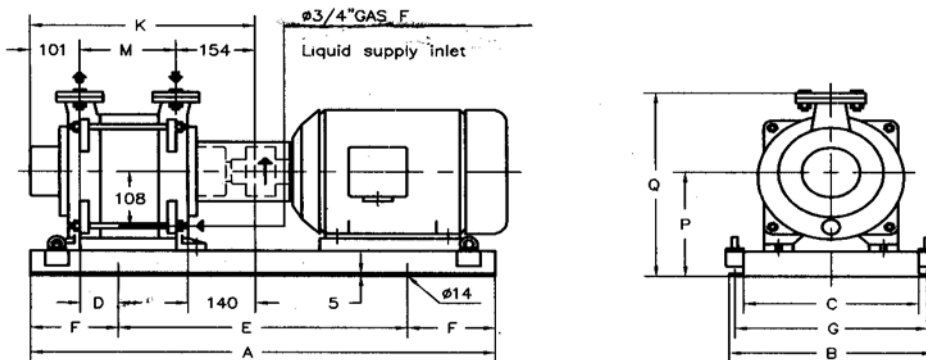
CONTROFLANGE SECONDO UNI 2275/67 - PN 6
FLANGE SECONDO UNI 2224/67 - PN 6

COMPANION FLANGES ACCORDING TO UNI 2275/67 - NP 6
FLANGES ACCORDING TO UNI 2224/67 - NP 6

Closed-Coupled Construction with Mechanical Seal

Pump Type	4 Poles Motor HP	Pump				Weight ¹ lbs.
		E1	G1	L1	M	
TRSE 40-55/C	3	390	154	230	110	103
	5					

Base-Mounted Construction (Baseplate-Coupling) with Mechanical Seal



Pump Type	4 Poles Motor HP	Base-plate	Pump											Weight ¹ lbs.
			A	B	C	D	E	F	G	K	M	P	Q	
TRSE 40-55/C	3	901	770	350	290	65	420	175	320	365	110	220	376	130
	5													

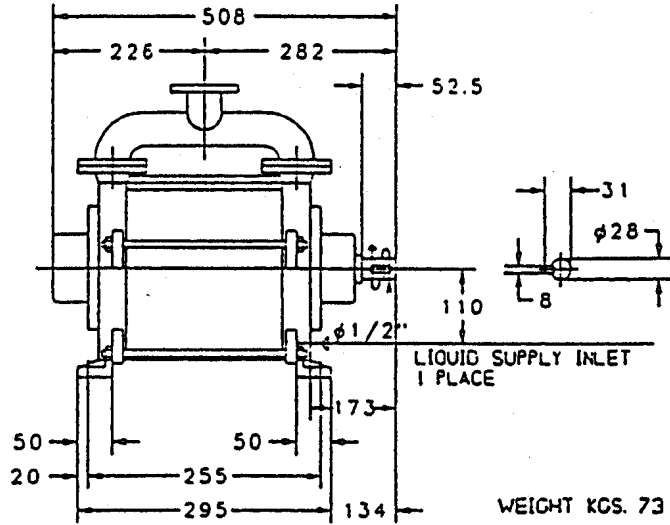
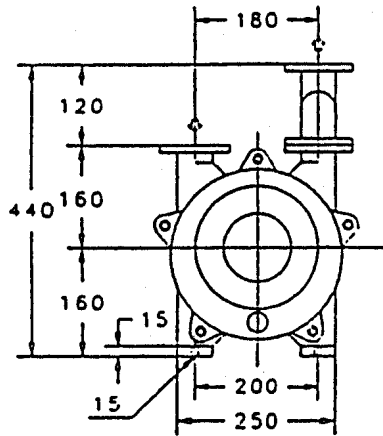
¹ Weight without motor
Dimensions are for reference only.
The weights are referred to GH Construction



Liquid Ring & Rotary Vane Vacuum Pumps and System

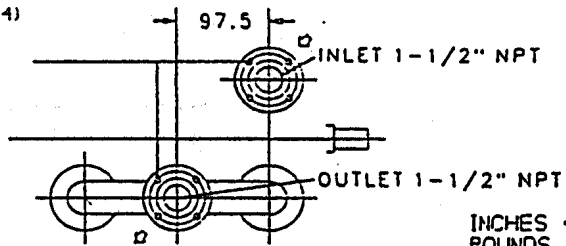
TRSE 40/150/C

Bareshaft Construction



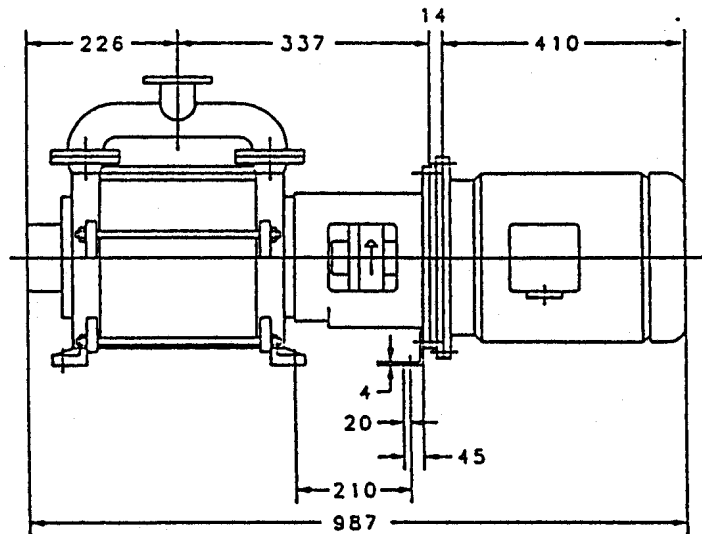
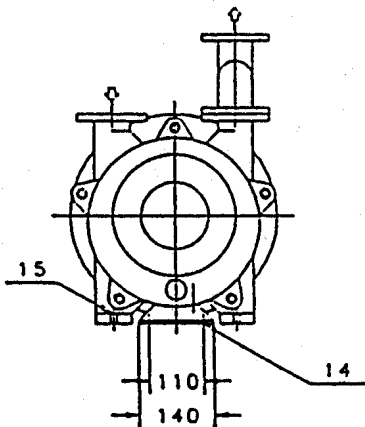
COMPANION FLANGES ARE PROVIDED (REFER TO PAGE 2-014)

Pump Model	Motor Details		Weight LBS.
	Frame	HP	
TRSC 40-150/C	213 TC	7.5	250



INCHES - mm ÷ 25.4
POUNDS - Kgs X 2.2

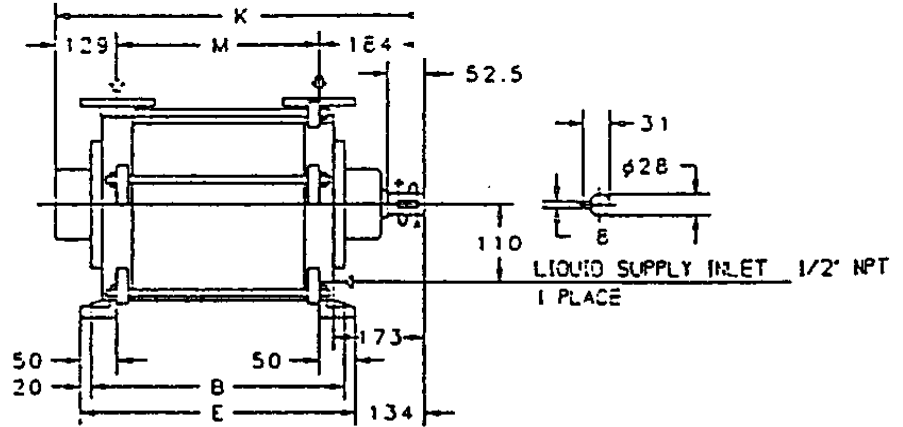
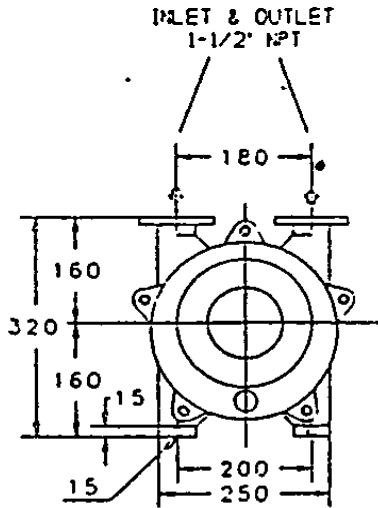
MONOBLOCK construction



DIMENSIONS (IN mm) AND WEIGHT (IN Kgs.) NOT BINDING

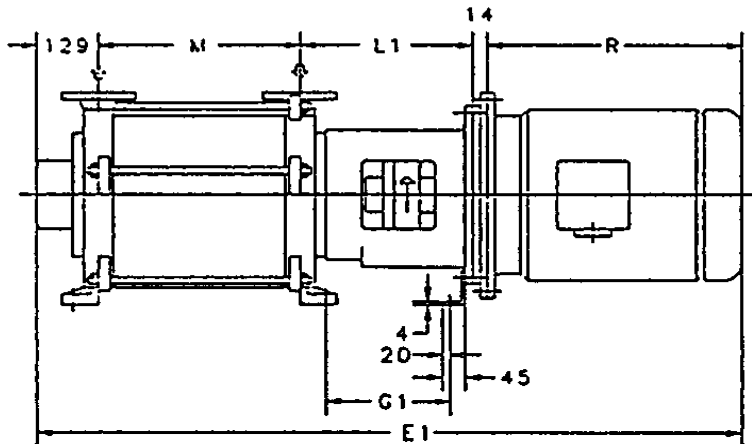
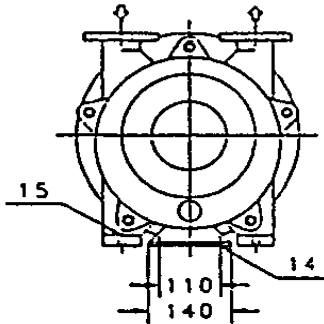
Note: mm. ----- = inches
25.4

TRSE 40/100/C Bareshaft Construction



Pump Model	B	E	K	Weight LBS
TRSC 40-100/C	225	265	478	130

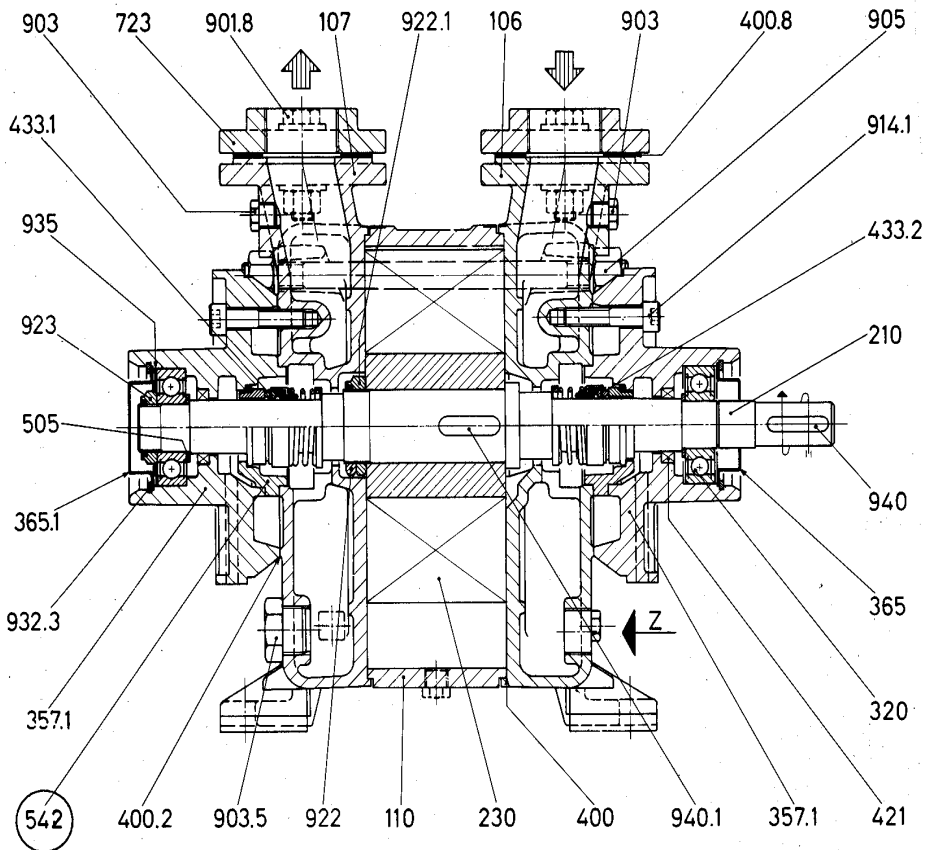
MONOBLOCK construction



Note: mm.
Dimensions in mm. ----- = inches
25.4

Pump Model	Motor Details			Pump				Weight LBS.
	Frame	HP	R	E1	G1	L1	M	
TRSC 40-100/C	184T	5	410	997	210	279	165	200

Typical Cross Sections



Typical cross section with mechanical seal
TRSC 100/C & 150/C

COMPONENTS

Part No.	Description
106	Suction casing
107	Discharge casing
110	Impeller casing
147	Manifold
• 210	Shaft
• 230	Impeller
• 320	Ball bearing
357	Bearing and mech. seal housing
357.1	Bearing and mech. seal housing
360.1	Bearing cover
365	Bearing cover
• 400	Gasket
• 400.2	Gasket
• 400.8	Gasket
• 421	Radial seal ring
• 433.1	Mechanical seal c.c.w.
• 433.2	Mechanical seal c.w.
485	Mechanical seal locking ring
• 505	Shoulder ring
542	Seal bush (A3 construction only)
723	Companion flange
901	Screw
901.8	Bolt
903	Plug
903.5	Plug
903.6	Plug
903.7	Plug
905	Tie-bolt
914	Screw
914.1	Screw
922	Nut
922.1	Nut
923	Nut
932	Circlip
932.3	Circlip
935	Elastic ring
940	Key
940.1	Key
Z	Liquid supply inlet

○ = A3 construction only

• = Recommended spare parts