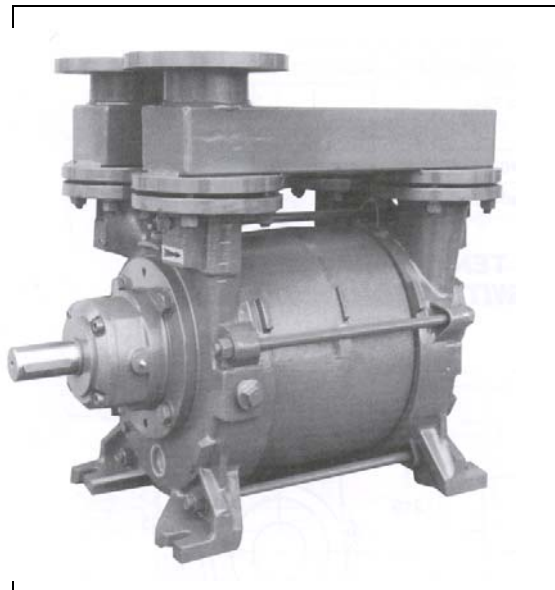


TRAVAINI PUMPS USA

TRSC 100

Single Stage Medium Vacuum Pumps

PERFORMANCE DATA	: From 100 Torr	CAPACITY:	235 - 530 cfm
FEATURES	: Single-stage rotating pump with externally located bearings grease lubricated.		
SHAFT SEALING	: Mechanical seal - Double mechanical seal – Stuffing box.		
OPTIONS	: Bareshaft pump - Coupled to electric motor on baseplate - Monoblock with electric motor.		



TECHNICAL DATA					
PUMP TYPE		TRSC 100-550		TRSC 100-700	
Speed	RPM	1450	1750	1450	1750
Motor - installed power	HP	20	25	25	40
Average service liquid flow	GPM	10	10	10	10
Noise level at 150 Torr	dB(A)	76	78	76	78
Minimum suction pressure	Torr	90	90	90	90

Pumps are provided with threaded connections for service liquid, pump draining, grease and anticavitation valve and companion flanges. Pumps are also provided, by request, with auxiliary threaded connections, flanged air-liquid separator tank, non return valve, ejector, vacuum relief valve, valve to control the flow of the liquid supply, vacuum gauges, pressure gauges and compound gauges. We can also provide information on our water sealed and oil sealed systems. For more detailed information please contact our Sales Office.

Example for Model Designation	
T R S C 100 - 700 / C - M / GH	
T	Travaini Pump USA construction
R	Liquid Ring Pump
S	Single stage pump for medium vacuum
C	Design number
100700	Flange size (mm)
	Nominal capacity (m ³ /h)
C	Shaft sealing C = Mechanical seal C2 = Double mechanical seal B = Packing seal
M	Close-coupled construction with lantern (by request)
GH	Materials of construction GH-F-RA-A3 = See table

Standard Materials of Construction					
Part No.	Description	GH	F	RA	A3
106	Suction casing	Cast Iron			
107	Discharge casing				
137	Port plate				
110	Impeller housing				
210	Shaft	Stainless Steel AISI 420	Stainless Steel AISI 316		
147	Manifold	Steel			
357	Bearing housing mech. seal	Cast Iron			
230	Impeller	Bronze	Ductile Iron	Stainless Steel AISI 316	

Special Materials Available Upon Request

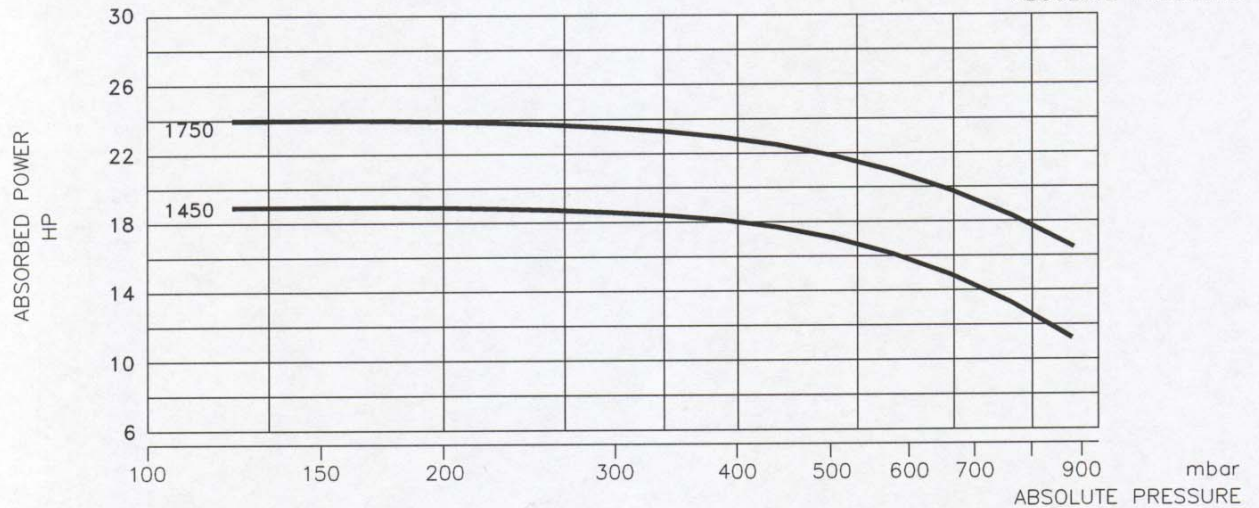
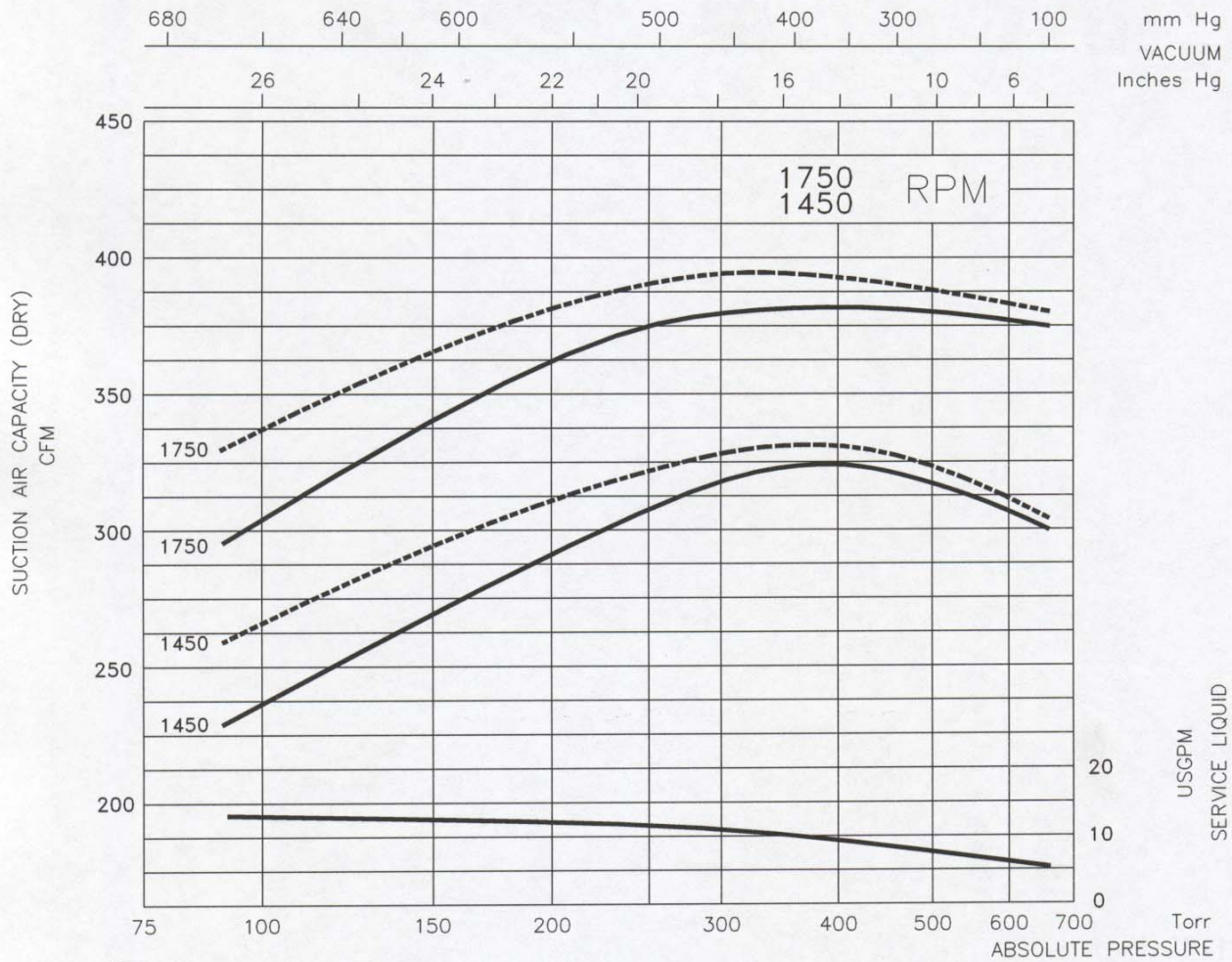
Indicative table: for further information please consult our Sales Office

DATA BASED ON :
 DRY AIR AT 68 °F - 20 °C
 SATURATED AIR AT 68 °F - 20 °C
 SERVICE LIQUID WATER
 SERVICE LIQUID TEMPERATURE 59 °F - 15 °C
 DISCHARGE PRESSURE 1013 mbar

S.S. PUMPS
 CAPACITY : -10%

Tol.: 10%

PERFORMANCE DATA
 LIQUID RING VACUUM PUMP
 PUMP MODEL
TRSC 100-550



DATE: APRIL 97

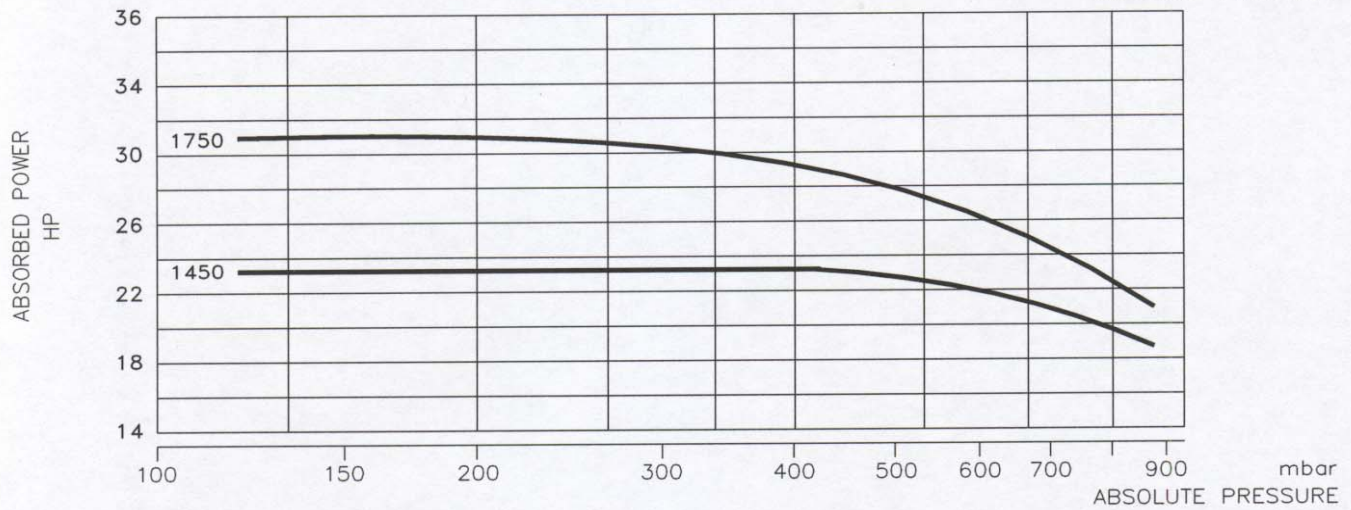
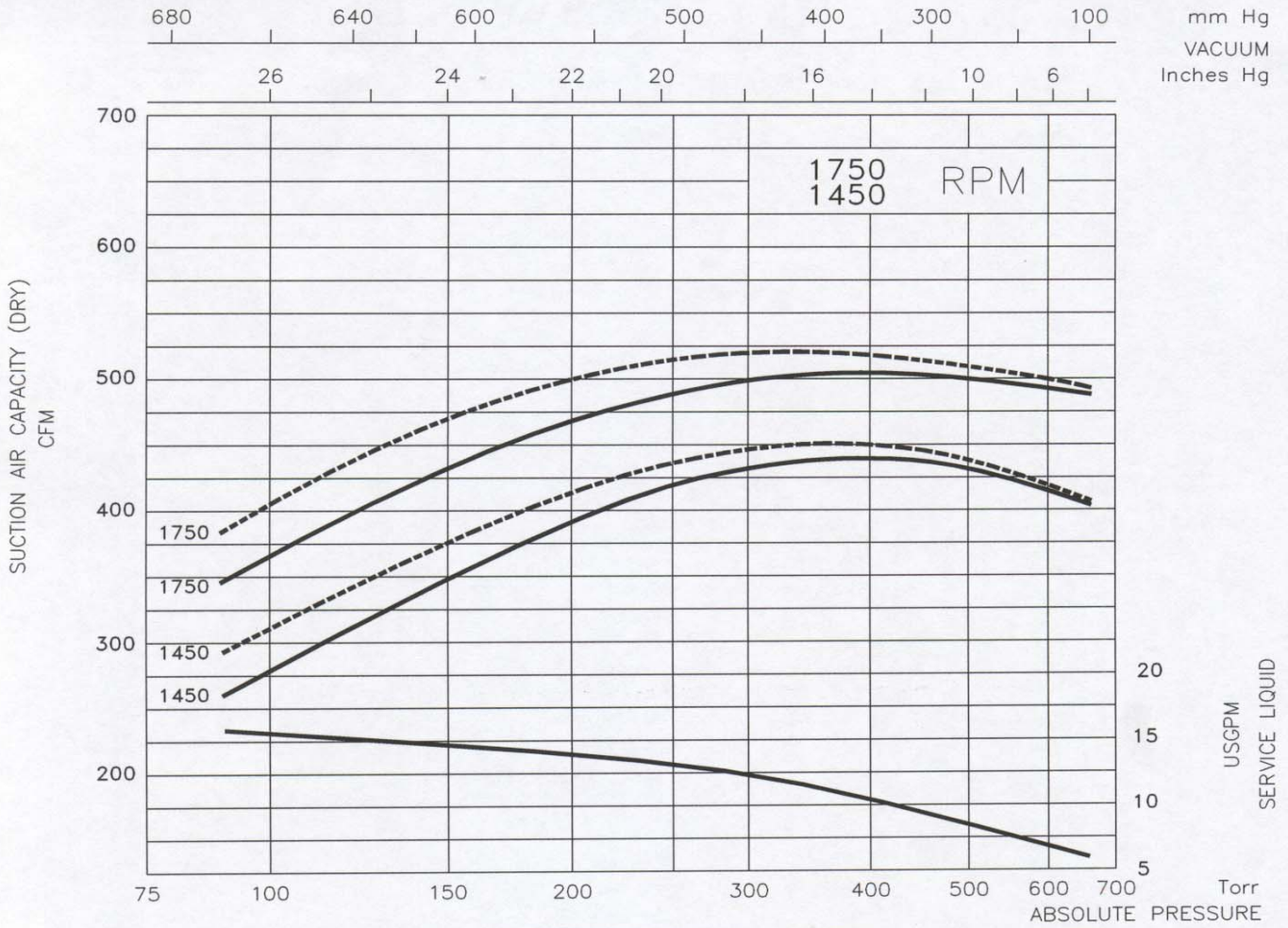
PAGE NO: 3-140

DATA BASED ON :
 DRY AIR AT 68 °F - 20 °C
 SATURATED AIR AT 68 °F - 20 °C
 SERVICE LIQUID WATER
 SERVICE LIQUID TEMPERATURE 59 °F - 15 °C
 DISCHARGE PRESSURE 1013 mbar

S.S. PUMPS
 CAPACITY : -10%

Tol.: 10%

PERFORMANCE DATA
 LIQUID RING VACUUM PUMP
 PUMP MODEL
TRSC 100-700

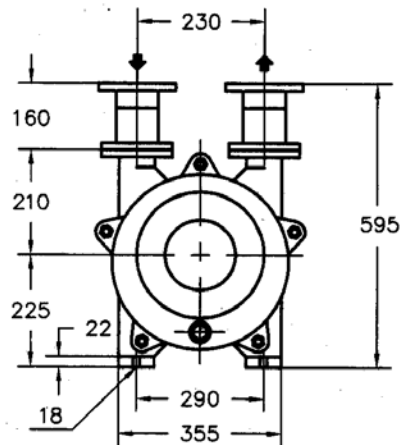
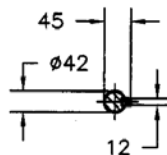
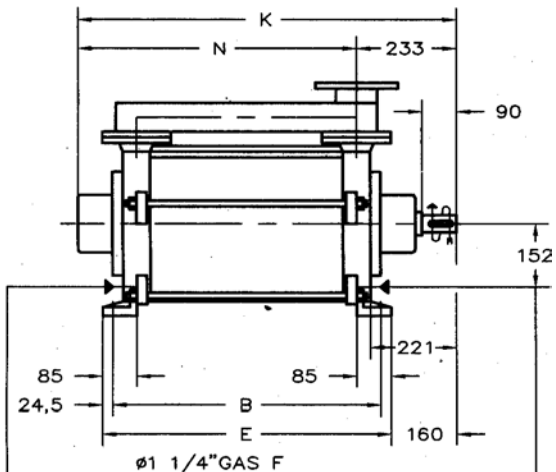


DATE: APRIL 97

PAGE NO: 3-142

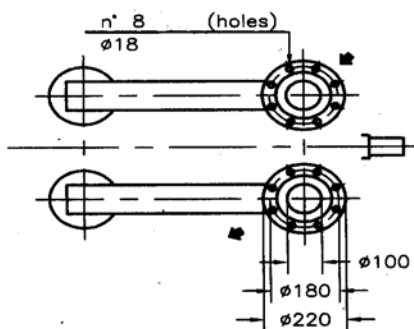
TRSC 100/C

Bareshaft Construction with Mechanical Seal



Liquid supply inlet

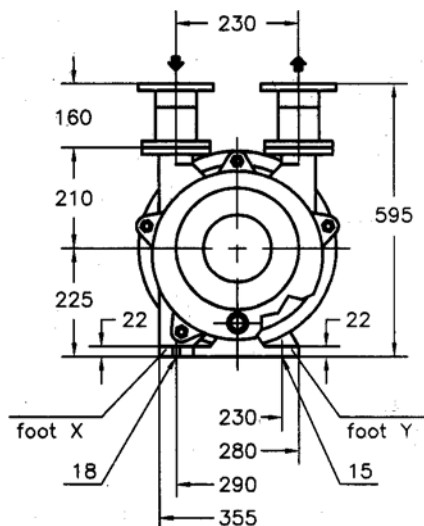
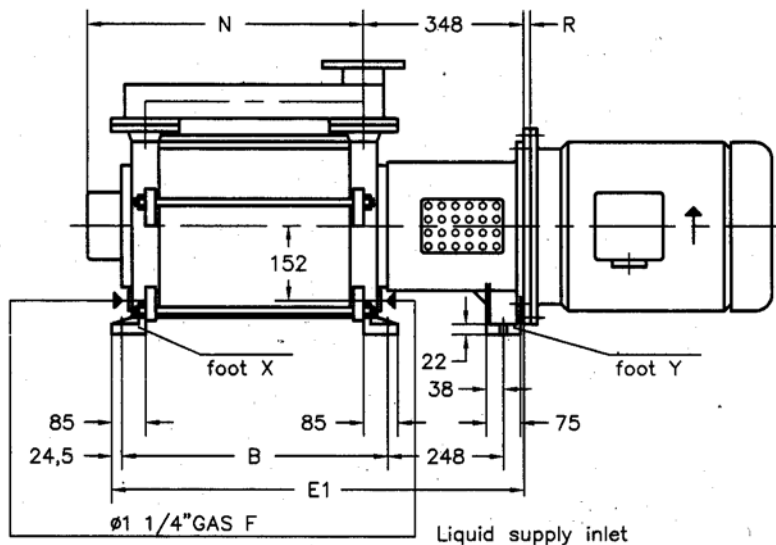
Feed pipe $\text{Ø } 1 \frac{1}{2}$ " GAS



Pump Type	B	E	K	N	Weight lbs.
TRSC 100-550/C	447	496	722	489	440
TRSC 100-700/C	512	561	787	554	506

Note: Dimensions in mm.
(mm to in = /25.4)

Closed-Coupled Construction with Mechanical Seal



Pump Type	4 Poles Motor HP	PUMP				Weight ¹ lbs.
		B	E1	N	R	
TRSC 100-550/C	20	447	763	489	-	495
	25					
TRSC 100-700/C	30	512	828	554	-	561
	40					

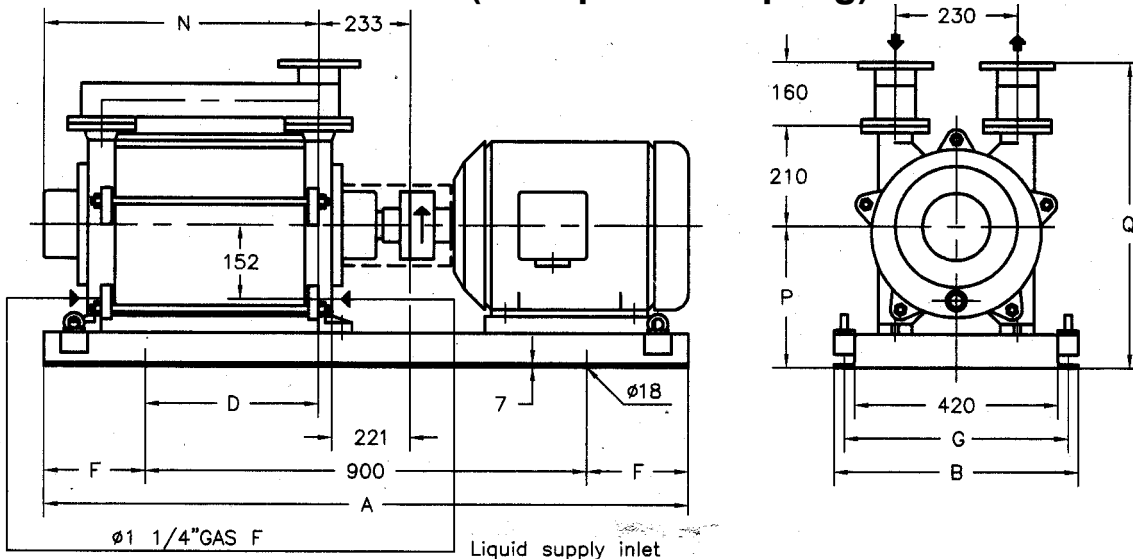
¹ Weight without motor

Dimensions for reference only. Please consult factory for certified drawing

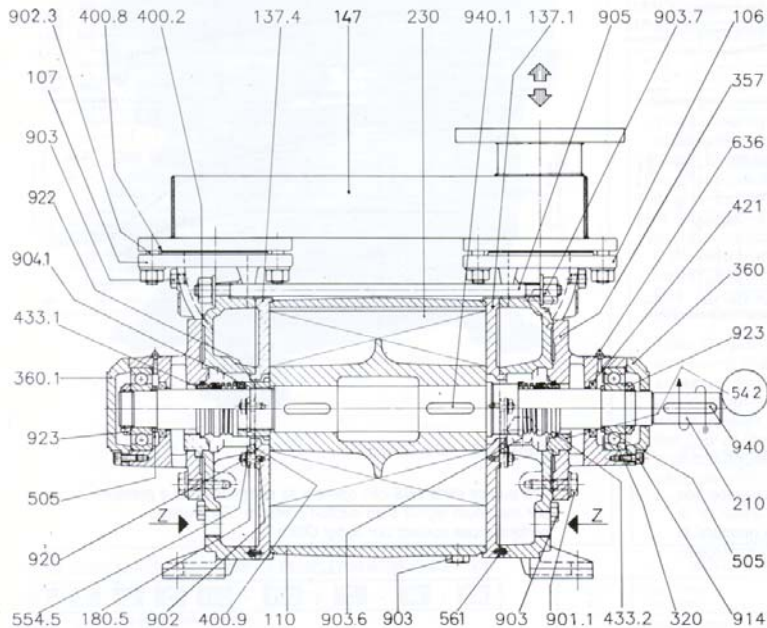
The weights refer to GH construction

TRSC 100/C

Base-Mounted Construction (Baseplate-Coupling) with Mechanical Seal



Pump Type	4 Poles Motor HP	Baseplate	Pump							Weight ¹ lbs.	
			A	B	D	F	G	N	P		Q
TRSC 100-550/C	20	907	1200	510	295	150	470	489	325	695	719
	25				275						
TRSC 100-700C	25	041	1350	560	266	225	510	554	355	725	836
	30										847
	40										



Typical Cross Section with Mechanical Seal

TRSC 100 - 550/C, 700/C

COMPONENTS

VDMA No	DESIGNATION	VDMA No	DESIGNATION	VDMA No	DESIGNATION
106	Suction casing	• 400.8	Gasket	903	Plug
107	Discharge casing	400.9	Flat valve	903.6	Plug
110	Impeller casing	• 421	Radial seal ring	903.7	Plug
137.1	Side element	• 433.1	Mechanical seal c.c.w.	904.1	Grub screw
137.4	Side element	• 433.2	Mechanical seal c.w.	905	Tie-bolt
147	Manifold	• 505	Shoulder ring	914	Screw
180.5	Valve plate	542	Seal bush	920	Nut
• 210	Shaft	(A3 construction only)		922	Nut
• 230	Impeller	554.5	Washer	923	Nut
• 320	Ball bearing	561	Cylinder pin	940	Key
357	Bearing and mech. seal housing	636	Grease nipple	940.1	Key
360	Bearing cover	901.1	Screw	Z	Liquid supply inlet
360.1	Bearing cover	902	Stud		
• 400.2	Gasket	902.3	Stud		

○ = A3 construction only

• = Recommended spare parts