

TRAVAINI PUMPS USA

TRSE 125

Single Stage Medium Vacuum Pumps

| | | | |
|------------------|--|-----------|----------------|
| PERFORMANCE DATA | : From 150 Torr | CAPACITY: | 500 - 1100 cfm |
| FEATURES | : Single-stage rotating pump with externally located bearings grease lubricated. | | |
| SHAFT SEALING | : Mechanical seal - Double mechanical seal – Packing seal. | | |
| OPTIONS | : Bareshaft pump - Coupled to electric motor on baseplate. | | |



| TECHNICAL DATA | | | | | |
|-----------------------------|-------|---------------|------|---------------|------|
| PUMP TYPE | | TRSE 125-1250 | | TRSE 125-1550 | |
| Speed | RPM | 960 | 1150 | 960 | 1150 |
| Motor - installed power | HP | 50 | 60 | 60 | 100 |
| Average service liquid flow | GPM | 24 | 24 | 26 | 26 |
| Noise level at 189 Torr | dB(A) | 79 | 82 | 79 | 82 |
| Minimum suction pressure | Torr | 150 | 150 | 150 | 150 |

Pumps are provided with threaded connections for service liquid, pump draining, grease and anticavitation valve and companion Flanges. Pumps are also provided, by request, with auxiliary threaded connections, flanged air-liquid separator tank, non return valve, ejector, vacuum relief valve, flow valve to control the flow of the liquid supply, vacuum gauges, pressure gauges and compound gauges. We can also provide information on our water sealed and oil sealed systems. For more detailed information please contact our Sales Office.

| Example for Model Designation | | Standard Materials of Construction | | | | | |
|------------------------------------|---|--|----------------------------|-----------------------------|--------------|-----------------------------|----|
| <u>T R S E 125 - 1550 / C / GH</u> | | Part No. | Description | GH | F | RA | A3 |
| T | Travaini Pump USA construction | 106 | Suction casing | Cast Iron | | | |
| R | Liquid Ring Pump | 107 | Discharge casing | | | | |
| S | Single stage pump for medium vacuum | 110 | Impeller housing | | | | |
| E | Design number | 210 | Shaft | Stainless Steel AISI 420 | | Stainless Steel AISI 316 | |
| 125 | Flange size (mm) | 147 | Manifold | Steel | | | |
| 1550 | Nominal capacity (m ³ /h) | 357 | Bearing housing mech. seal | Cast Iron | | | |
| C | Shaft sealing C = Mechanical seal C2 = Double mechanical seal B = Packing seal | 230 | Impeller | Bronze | Ductile Iron | Stainless Steel AISI 316 | |
| GH | Materials of construction GH-F-RA-A3 = See table | Special Materials Available Upon Request | | | | | |

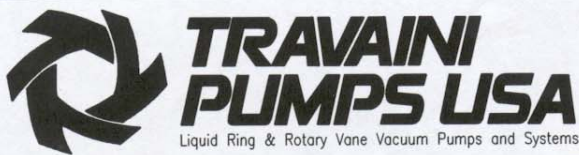
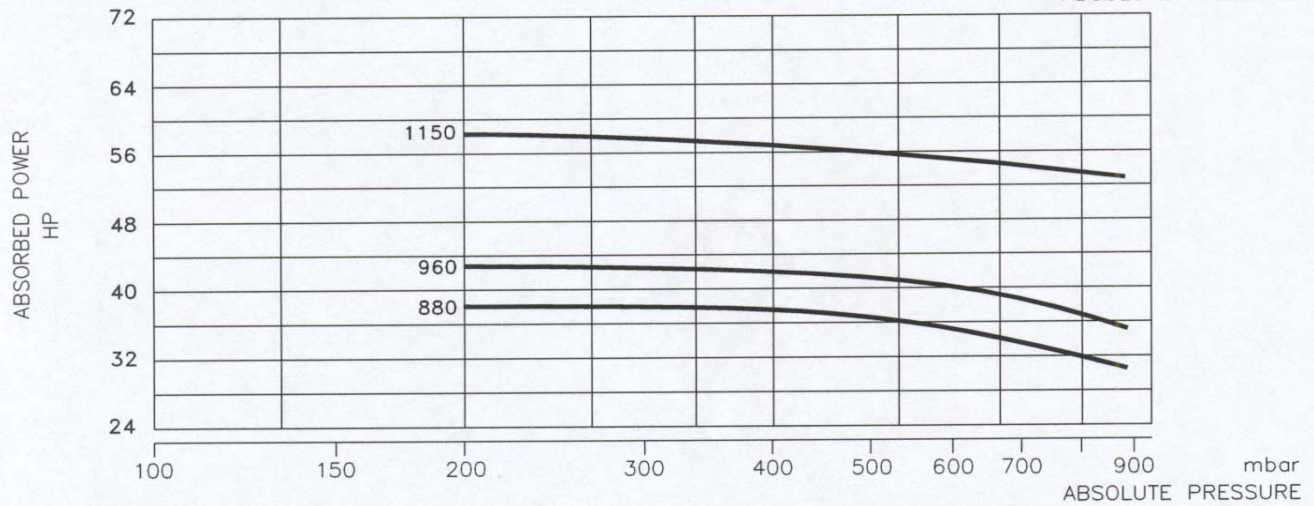
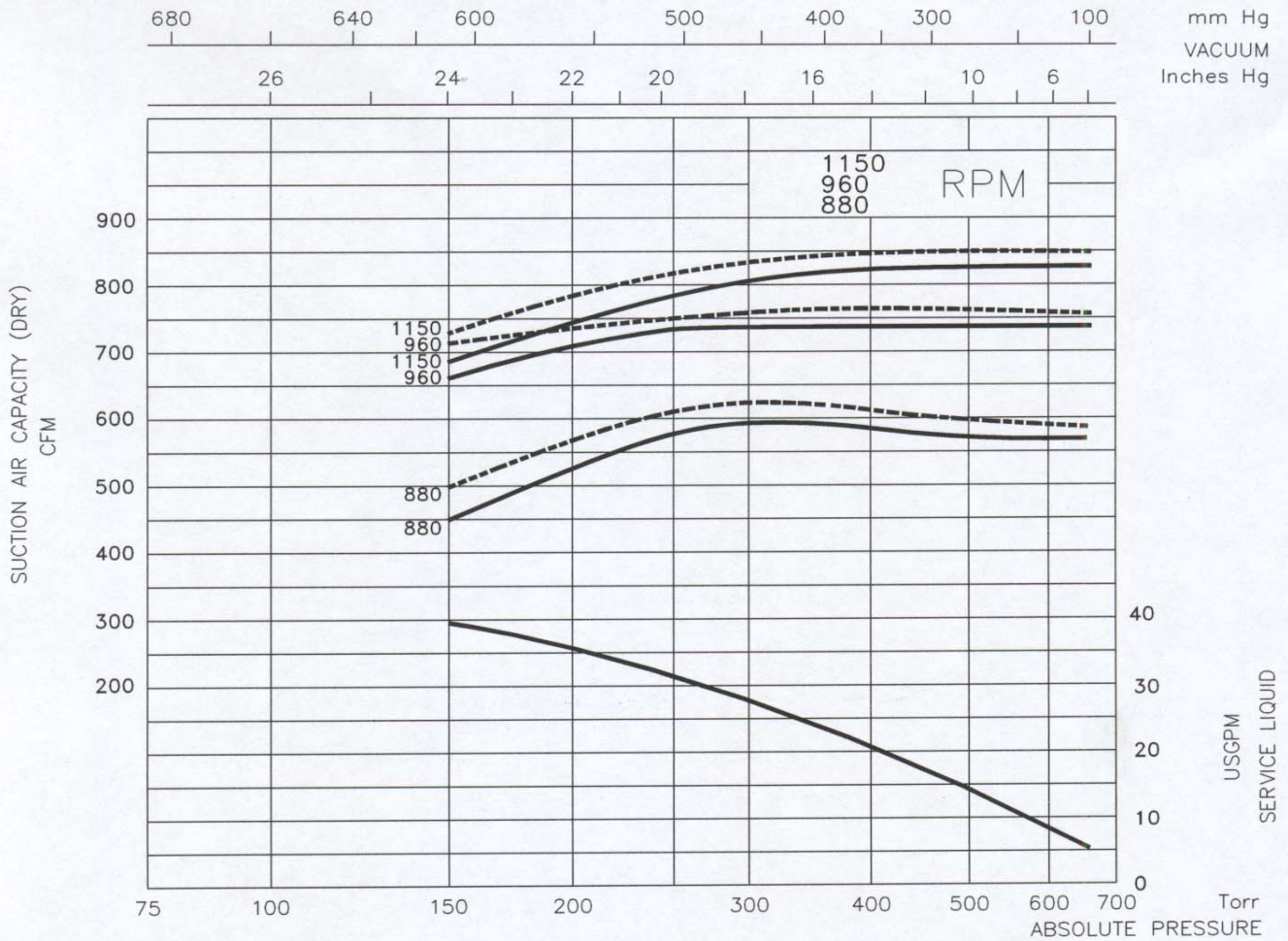
Indicative table: for further information please consult our Sales Office

DATA BASED ON :
 DRY AIR AT 68 °F - 20 °C
 SATURATED AIR AT 68 °F - 20 °C
 SERVICE LIQUID WATER
 SERVICE LIQUID TEMPERATURE 59 °F - 15 °C
 DISCHARGE PRESSURE 1013 mbar

S.S. PUMPS
 CAPACITY : -10%

Tol.: 10%

PERFORMANCE DATA
 LIQUID RING VACUUM PUMP
 PUMP MODEL
TRSE 125-1250



DATE: APRIL 97

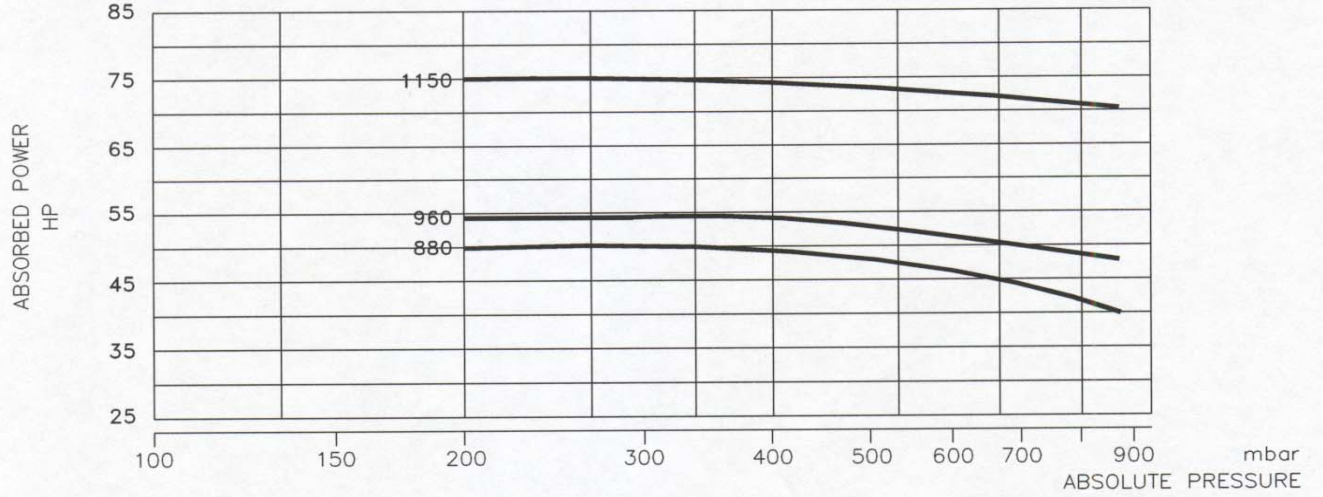
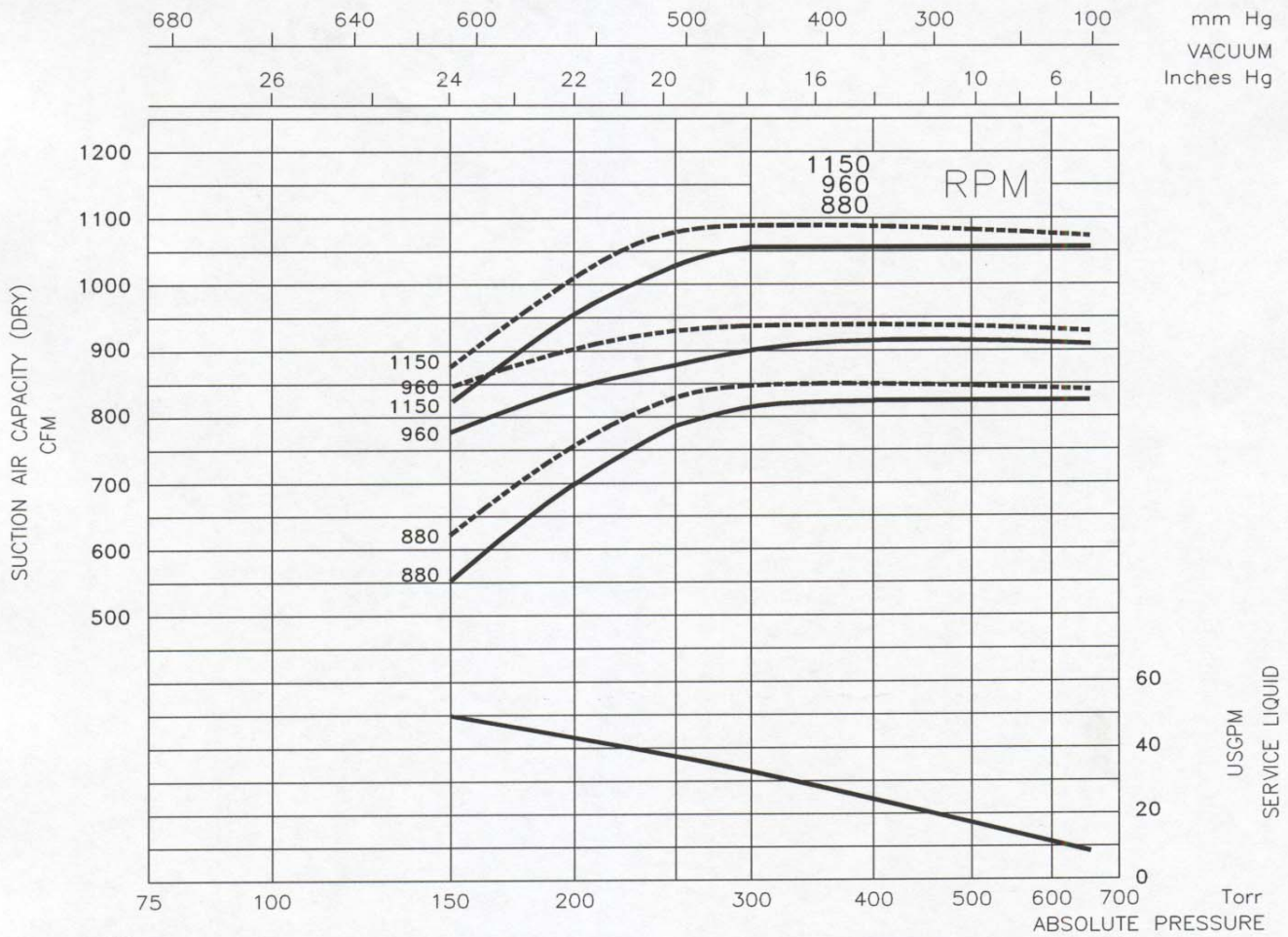
PAGE NO: 3-150

DATA BASED ON :
 DRY AIR AT 68 °F - 20 °C
 SATURATED AIR AT 68 °F - 20 °C
 SERVICE LIQUID WATER
 SERVICE LIQUID TEMPERATURE 59 °F - 15 °C
 DISCHARGE PRESSURE 1013 mbar

S.S. PUMPS
 CAPACITY : -10%

PERFORMANCE DATA
 LIQUID RING VACUUM PUMP
 PUMP MODEL
TRSE 125-1550

Tol.: 10%

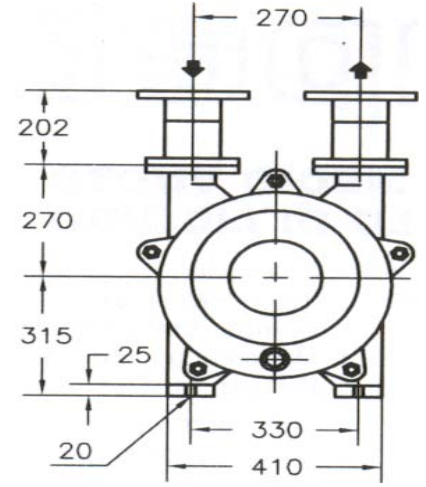
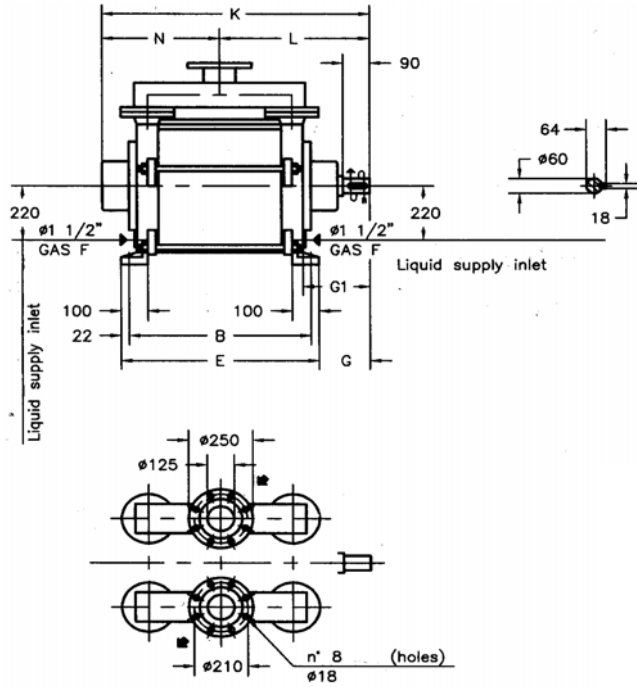


DATE: APRIL 97

PAGE NO:

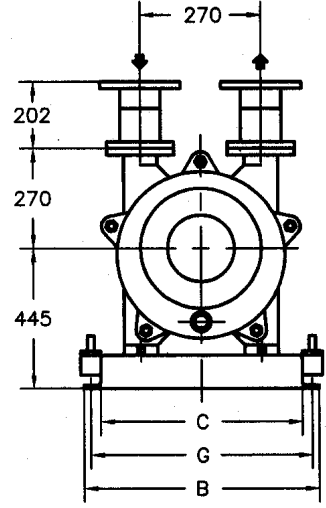
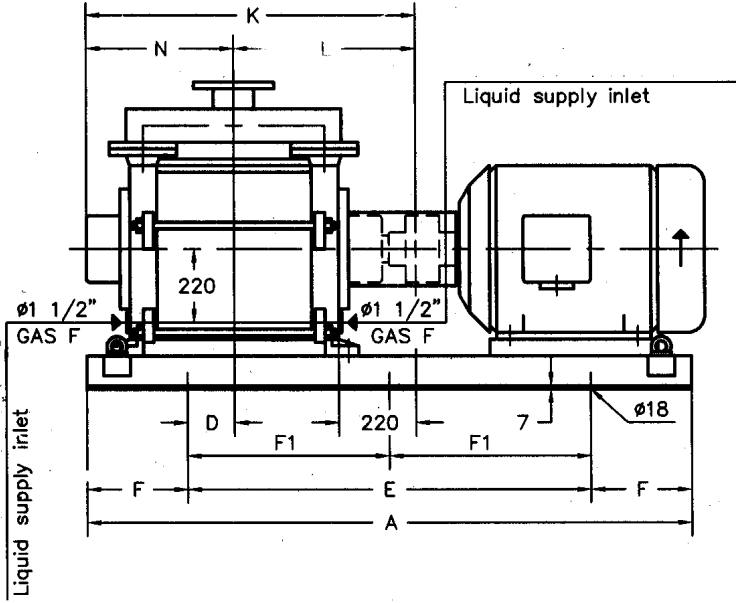
TRSE 125/C

Bareshaft Construction with Mechanical Seal



| Pump Type | B | E | K | L | N | Weight lbs. |
|-----------------|-----|-----|-----|-----|-----|-------------|
| TRSE 125-1250/C | 601 | 645 | 847 | 482 | 365 | 959 |
| TRSE 125-1550/C | 701 | 745 | 947 | 532 | 415 | 1016 |

Base-Mounted Construction (Baseplate-Coupling) with Mechanical Seal



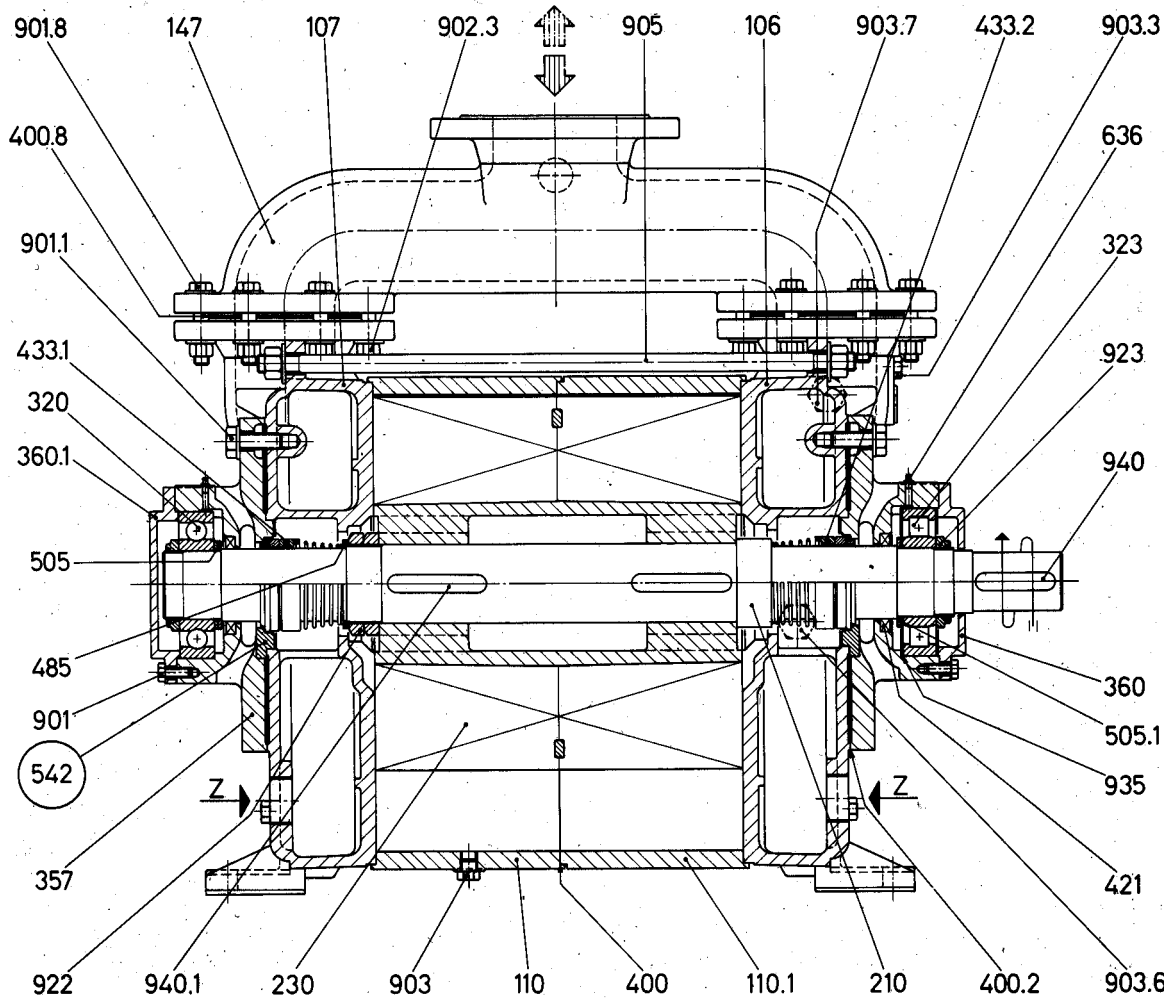
Note: Dimensions in mm.
(mm to in = /25.4)

| Pump Type | 6 Poles Motor HP | Base-plate | Pump | | | | | | | | | | Weight ¹ lbs. | | | | | |
|-----------------|------------------|------------|------|-----|-----|-----|------|-----|-----|-----|-----|-----|--------------------------|--|--|--|--|--|
| | | | A | B | C | D | E | F | F1 | G | L | N | | | | | | |
| TRSE 125-1250/C | 40 | 034 | 1700 | 590 | 450 | 220 | 1100 | 300 | - | 540 | 482 | 365 | 1318 | | | | | |
| | 50 | 042 | 1800 | 640 | 500 | | 1400 | 200 | 700 | 590 | | | 1311 | | | | | |
| | 60 | | | | | 320 | | | | | | | 1338 | | | | | |
| TRSE 125-1550/C | 60 | 039 | 2150 | 680 | 540 | 360 | 1600 | 275 | 800 | 630 | 532 | 415 | 1395 | | | | | |
| | 75 | | | | | | | | | | | | | | | | | |
| | 100 | | | | | | | | | | | | | | | | | |

¹ Weight without motor
Dimensions for reference only
Please consult factory for certified drawings.
The weights refer to GH construction

TRSE 125- 1250/C, 1550/C

Typical Cross Section with Mechanical Seal



COMPONENTS

| VDMA No | DESIGNATION | VDMA No | DESIGNATION | VDMA No | DESIGNATION |
|---------|------------------------------|---------|-------------------------------------|---------|---------------------|
| 106 | Suction casing | • 400.2 | Gasket | 901.8 | Bolt |
| 107 | Discharge casing | • 400.8 | Gasket | 902.3 | Stud |
| 110 | Impeller casing | • 421 | Radial seal ring | 903 | Plug |
| 110.1 | Impeller casing | • 431.1 | Mechanical seal c.c.w. | 903.3 | Plug |
| 147 | Manifold | • 433.2 | Mechanical seal c.w. | 903.6 | Plug |
| • 210 | Shaft | 485 | Mech. seal locking ring | 903.7 | Plug |
| • 230 | Impeller | • 505 | Shoulder ring | 905 | Tie-bolt |
| • 320 | Ball bearing | • 505.1 | Shoulder ring | 922 | Nut |
| • 323 | Roller bearing | 542 | Seal bush (A3 construction only) | 923 | Nut |
| 357 | Bearing and mech. seal hous. | 636 | Grease nipple | 935 | Elastic ring |
| 360 | Bearing cover | 901 | Screw | 940 | Key |
| • 360.1 | Bearing cover | 901.1 | Screw | 940.1 | Key |
| • 400 | Gasket | | | Z | Liquid supply inlet |

○ = A3 construction only

• = Recommended spare parts