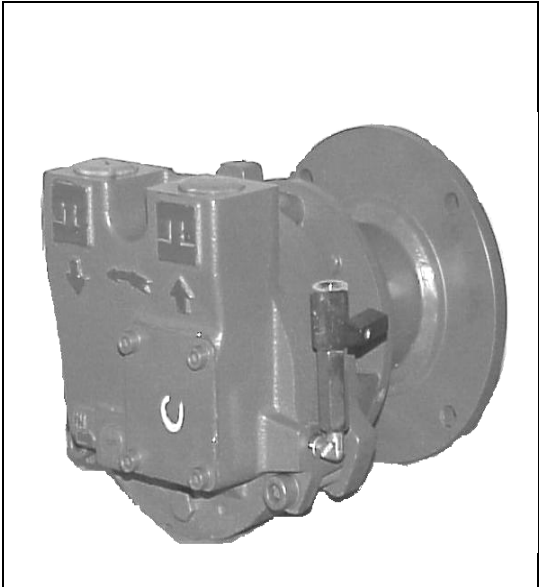


# TRAVAINI PUMPS USA

## TRVB 32-25

### Single Stage Medium/High Vacuum Pumps

PERFORMANCE DATA	: From 30 Torr	CAPACITY:	4-16 cfm
FEATURES	: Single-stage rotating pump with electric motor ball bearings grease lubricated.		
SHAFT SEALING	: Mechanical seal		
OPTIONS	: Direct monoblock with electric motors.		



TECHNICAL DATA			
PUMP TYPE		TRVB 32-25	
Speed	RPM	2900	3500
Motor - installed power	HP	1	1.5
Average service liquid flow	GPM	1.0	1.0
Noise level at 60 Torr	dB(A)	69	69
Minimum suction pressure	Torr	30	30

Pumps are provided with threaded connections for service liquid, pump draining, anticavitation valve.  
Pumps are also provided, by request, with flanged air-liquid separator tank, non return valve, ejector, vacuum relief valve, valve to control the flow of the liquid supply, vacuum gauges, pressure gauges and compound gauges. We can also provide information on our water sealed and oil sealed systems.  
For more detailed information please contact our Sales Office.

Example for Model Designation	
T R M B 25 - 30 / GH	
<b>T</b>	Travaini Pump USA construction
<b>R</b>	Liquid Ring Pump
<b>M</b>	Single stage pump with valves for medium and high vacuum
<b>B</b>	Design number
<b>32</b>	Flange size (mm)
<b>50</b>	Nominal capacity (m <sup>3</sup> /h)
<b>GH</b>	Materials of construction GH-A3 = See table

Standard Materials of Construction			
Part No.	Description	GH	A3
101	Discharge casing	Cast Iron	
120	Rear casing		
137.1	Port Plate		
210	Shaft	Stainless Steel AISI 420	Stainless Steel AISI 316
230	Impeller	Bronze	

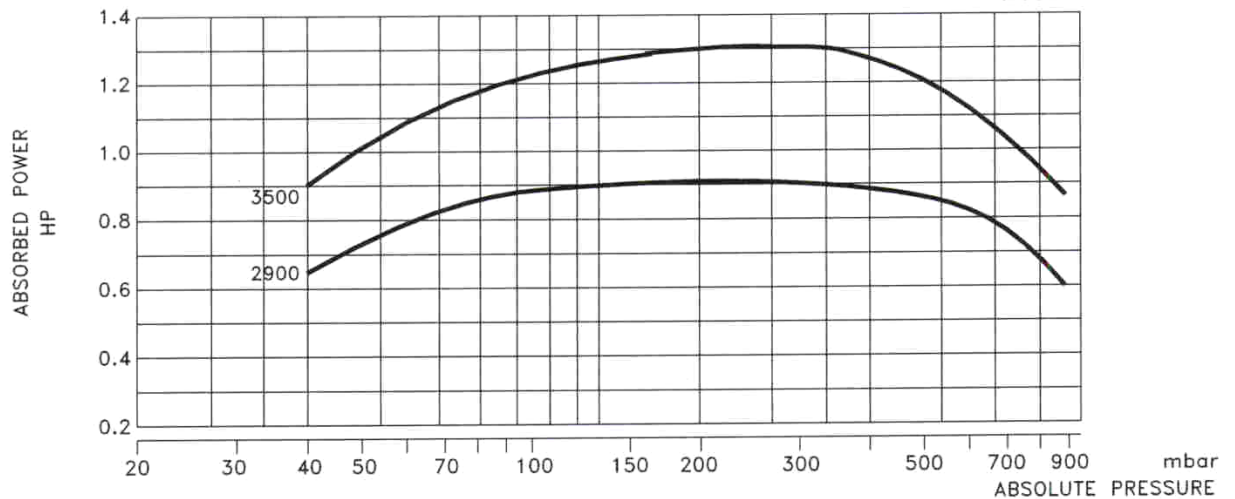
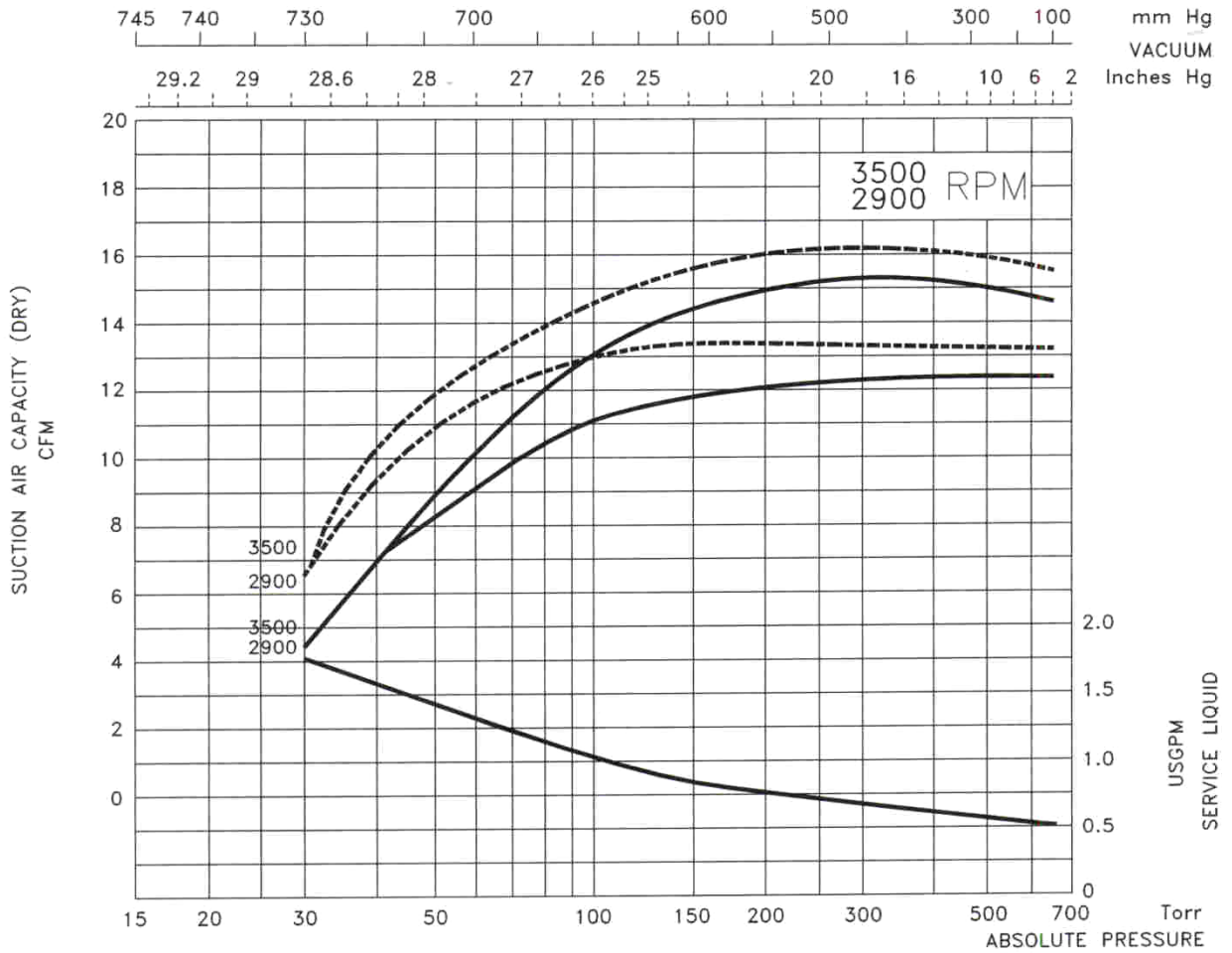
Special Materials Available Upon Request

Indicative table: for further information please consult our Sales Office

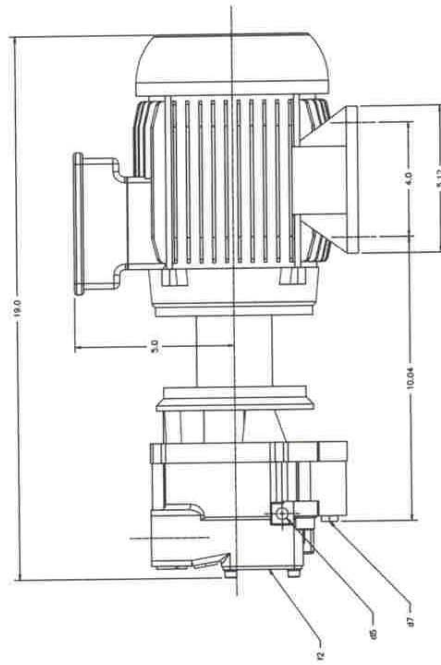
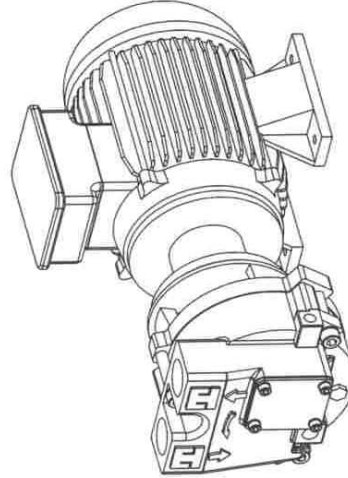
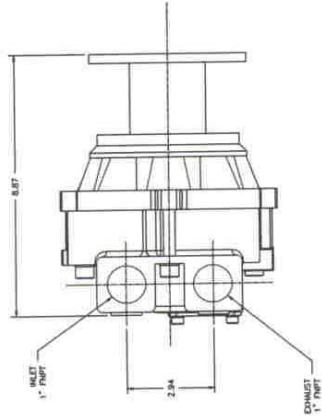
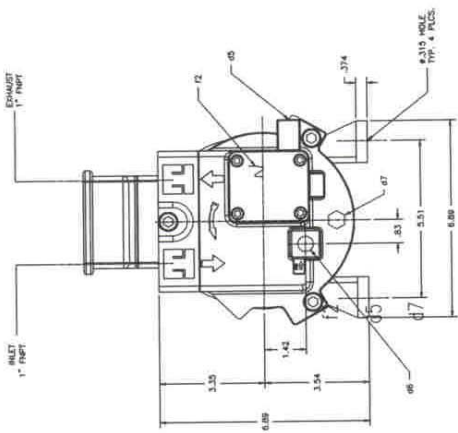
DATA BASED ON :  
 DRY AIR AT 68 °F - 20 °C  
 SATURATED AIR AT 68 °F - 20 °C  
 SERVICE LIQUID WATER  
 SERVICE LIQUID TEMPERATURE 59 °F - 15 °C  
 DISCHARGE PRESSURE 1013 mbar

S.S. PUMPS  
 CAPACITY : -10%  
 Tol.: 10%

PERFORMANCE DATA  
 LIQUID RING VACUUM PUMP  
 PUMP MODEL  
**TRVB 32-25**



DATE : APRIL 97



- 85 = 1/2" NPT Lubrication valve connection
- 86 = 1/2" NPT Lubrication valve connection
- 87 = 1/2" NPT Drain connection
- F2 = Vacuum valve inspection opening

THIS PRINT IS THE PROPERTY OF TRAVANI PUMPS USA, INC. IT IS TO BE KEPT IN THE OFFICE OF THE DESIGNER WITHOUT THE CONSENT OF TRAVANI PUMPS USA, INC.		DESCRIPTION		TRAVANI LIQUID RING PUMP	
S/N NO.		PART NO.		TRVRL2-25 MOTOR NEMA 143TC/145TC	
VARIOUS		N/A		MODEL NO.	
DATE		DATE		SCALE	
TRV X		X/X/X		1 = B	
APPROVED BY		APPROVED BY		REV	
N/A		N/A		REV	

REV	DESCRIPTION	DATE	APPR

TOLERANCES	
DECIMAL	± .003"
FRACTIONAL	± 1/32"
ANGULAR	± 0° 30' 00"
UNLESS OTHERWISE SPECIFIED IN DRAWING	

TRAVANI PUMPS USA  
 10000 W. 10th Ave. Suite 100  
 Denver, CO 80202  
 Phone: 303.751.1111  
 Fax: 303.751.1112  
 Email: sales@travani.com