

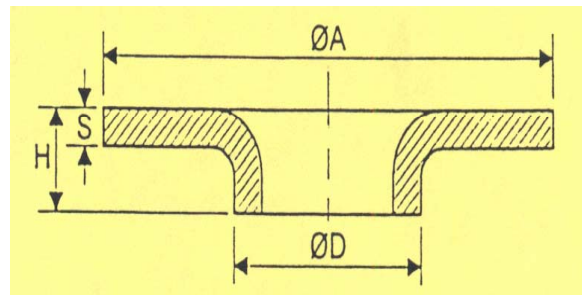
Engineering INFO		Engineering INFO
-----------------------------	--	-----------------------------

COMPANION FLANGE DATA

All pumps excluding 316SS construction (A3) are provided with carbon steel raised face NPT Threaded flanges. Weld Neck or Special arrangements available on request at an additional cost.

INLET & DISCHARGE SIZING BY PUMP SERIES

TRMA32-25, -50	= 1"
PLT3000	= 1 ½"
TRMA32-75	= 1 ½"
TRS40	= 1 ½"
TRH40	= 1 ½"
TRV40	= 1 ½"
TRV50	= 2"
TRV65	= 2 ½"
TRH80	= 3"
TRS/H100	= 4"
TRS125	= 5"
TRH150	= 6"
TRS200	= 8"



For (A3) Construction	All A3 pumps have 316 S/S Slip on Flanges Provided as Per Drawing
------------------------------	---

DN		D	S	A	H
Inches	mm				
½"	15	21.3	2.6	45	6
¾"	20	26.9	2.6	58	6
1"	25	33.7	2.6	68	8
1 ¼"	32	42.4	2.6	78	10
1 ½"	40	48.3	2.6	88	10
2"	50	60.3	2.6	102	12
2 ½"	65	76.1	2.9	122	12
3"	80	88.9	2.9	138	12
4"	100	114.3	2.9	158	12
5"	125	139.7	3	188	12
6"	150	168.3	3	212	12
8"	200	219.1	3	268	12