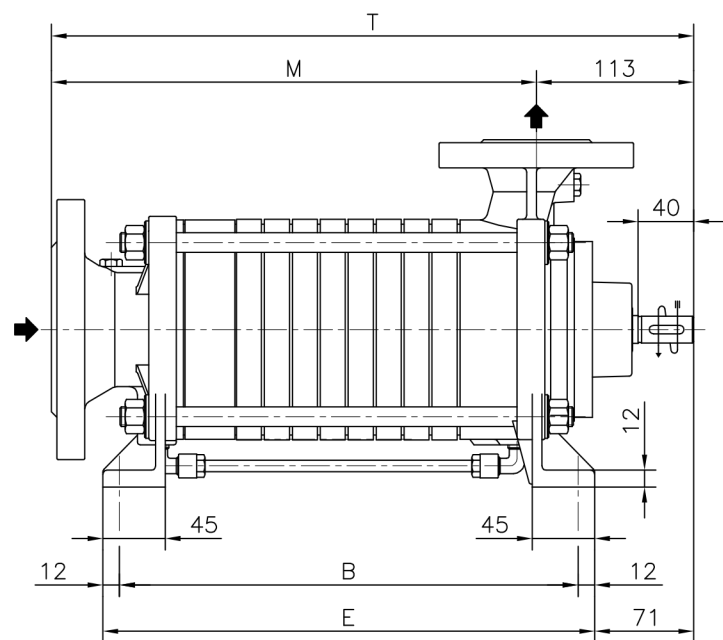
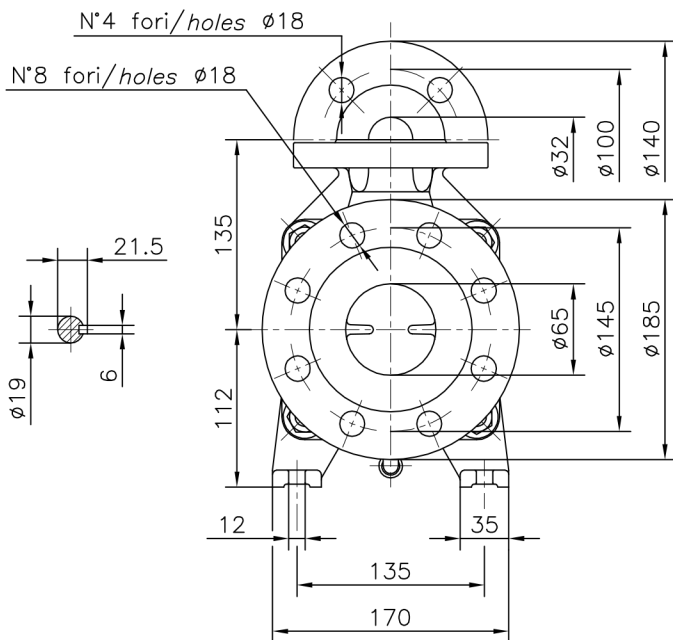


Versione ad ASSE NUDO
 Esecuzione /R



BARESHAF construction
 Construction /R



POMPA TIPO
 Pump type

Versione ad ASSE NUDO

BARESHAF construction

DIMENSIONI Dimensions

/R

/R/T

M

B

E

T

Peso Weight

T₁

Peso Weight

TBA 291 - 301 - 311

228

209

233

341

24

415

29

TBA 292 - 302 - 312

268

249

273

381

27,5

455

32,5

TBA 293 - 303 - 313

308

289

313

421

31

495

36

TBA 294 - 304 - 314

348

329

353

461

34,5

535

39,5

TBA 295 - 305 - 315

388

369

393

501

38

575

43

TBA 296 - 306 - 316

428

409

433

541

41,5

615

46,5

TBA 297 - 307 - 317

468

449

473

581

45

655

50

TBA 298 - 308 - 318

508

489

513

621

48,5

695

53,5

FLANGE:

Dimensioni secondo
 UNI 2223-2229 PN40

FLANGES:

Dimensions to
 UNI 2223-2229 NP40 standards

Disegno schematico. Dimensioni
 in mm con tolleranze secondo
 EN 735-1995. Pesì indicativi in Kg,
 riferiti a pompe in ghisa escluso
 motore, non impegnativi.

Schematic drawing. Dimensions in
 mm with tolerances to
 EN 735-1995 standards. Weights in
 Kgs, referred to pumps in cast iron
 without motor, not certified.

Esecuzione /R/T

Construction /R/T

