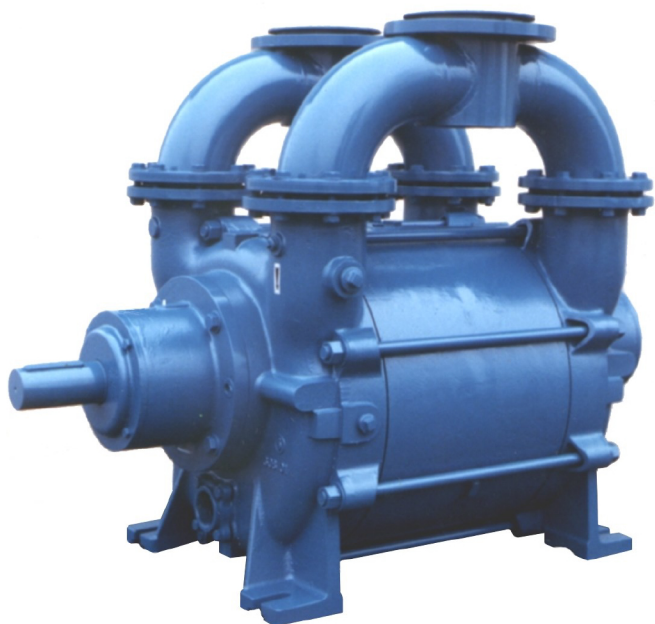


**TRSA200
Single Stage
Liquid Ring Vacuum Pump**



200 Newsome Drive
Yorktown, VA 23693
1-800-535-4243
www.Travaini.com



| | |
|------------------------------|--|
| Pressure Range | 150 to 760 TORR |
| Capacity | 1000 to 2150 CFM |
| Features | Single stage vacuum pump with external sealed bearings |
| Shaft Sealing Options | Mechanical seals (Double mechanical seals or stuffing box optional) |
| Options | Bareshaft pump Coupled to electric motor V-Belt driven |
| Optional Accessories | Available as a component in larger assembly |

Technical Data

| PUMP TYPE | | TRSA200-1950 | TRSA200-2500 | TRSA200-3100 |
|-----------------------------|-------|--------------|--------------|--------------|
| Speed | RPM | 880 | 880 | 880 |
| Motor - installed power | HP | 125 | 150 | 200 |
| Average service liquid flow | GPM | 40 | 55 | 60 |
| Noise level at 150 Torr | dB(A) | 85 | 85 | 85 |
| Minimum suction pressure | Torr | 150 | 150 | 150 |

Standard Materials of Construction**

| Part No. | Description | F | RX | RA | A3 |
|----------|------------------|--------------------------|--------------------------|--------------------------|-----------------------------|
| 106 | Suction casing | Cast iron | | | Stainless steel AISI 316 |
| 107 | Discharge casing | | | | |
| 110 | Impeller housing | | | | |
| 210 | Shaft | Stainless steel AISI 420 | Stainless steel AISI 316 | | |
| 357 | Bearing housing | Cast iron | | | |
| 230 | Impeller | Ductile iron | Stainless steel AISI 304 | Stainless steel AISI 316 | |

Model Designation

| TRSA200-3100/C/RA | |
|-------------------|--|
| T | Travaini manufacturer |
| R | Liquid ring pump |
| S | Single stage pump |
| A | Design revision |
| 200 | Flange size (mm) |
| 3100 | Nominal capacity (m ³ /hr) |
| C | Shaft sealing: C = Mechanical seal C2=Double mechanical seal B = Packing seal |
| RA | Materials of construction (see table) |

**Special materials available upon request

-Request for information on our WATERSEAL and DYNASEAL engineered vacuum systems

-For further information please consult Travaini Pumps USA.

| | | | | | |
|------|--------|------|-----------|-----|------------|
| REF: | JGJ/RK | Date | 1/16/2015 | Nº: | 100798.000 |
|------|--------|------|-----------|-----|------------|