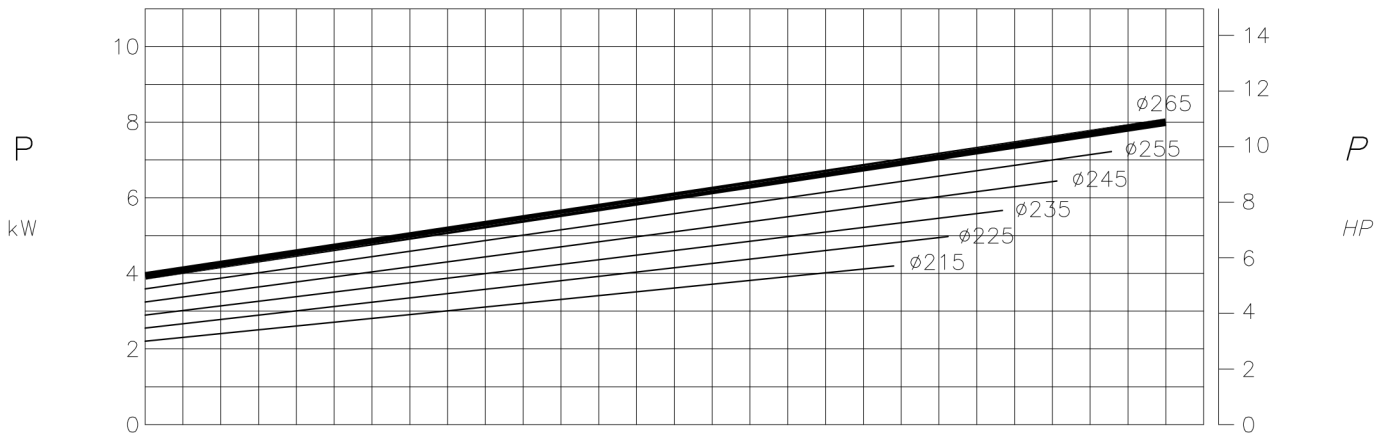
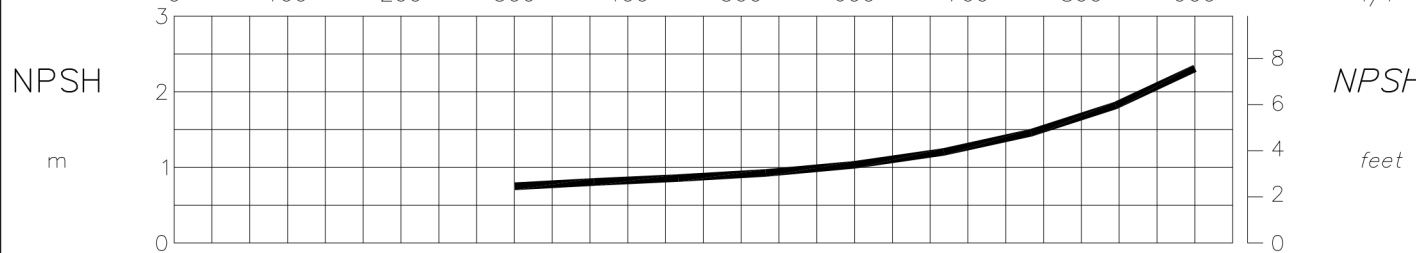
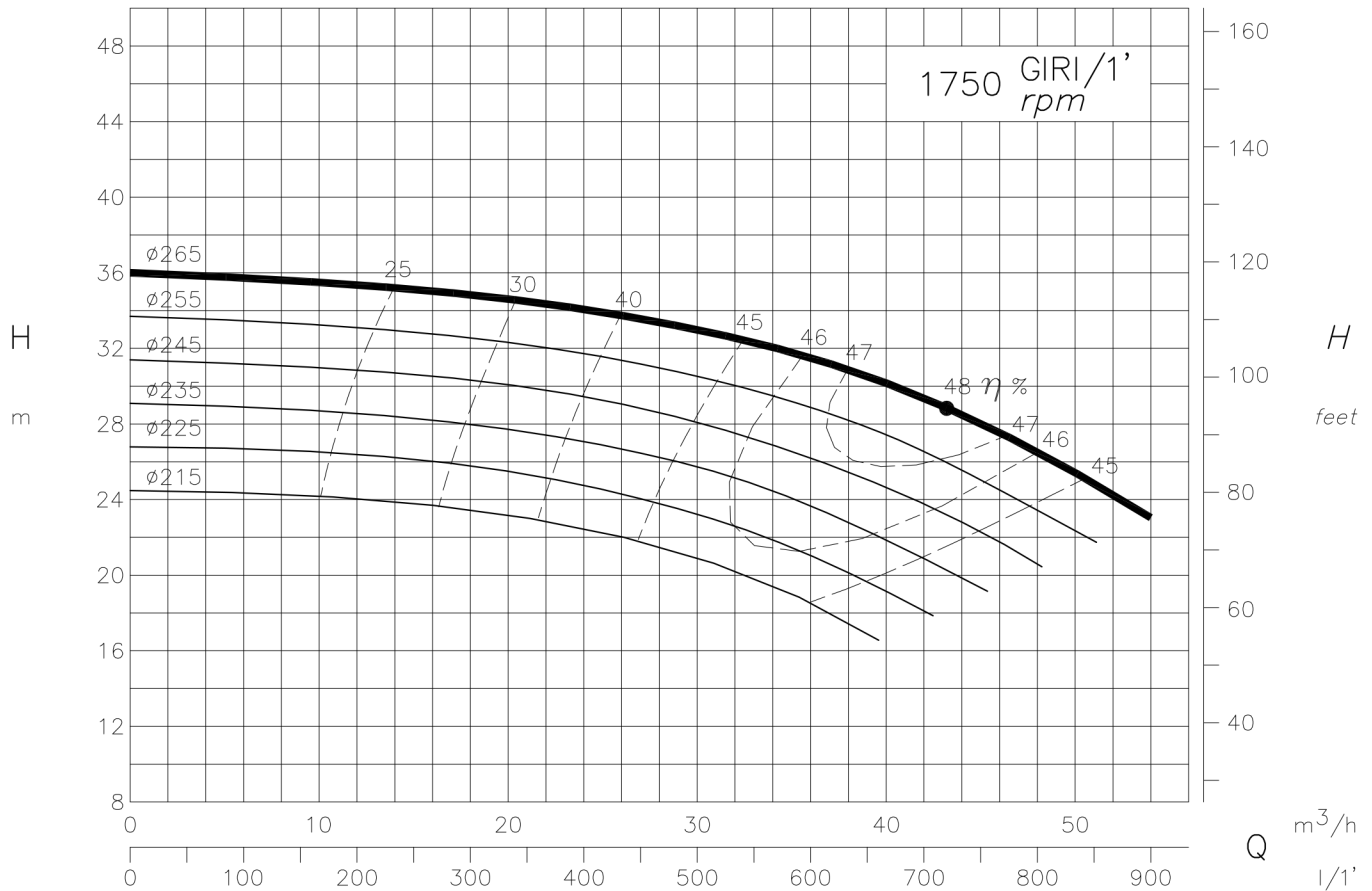
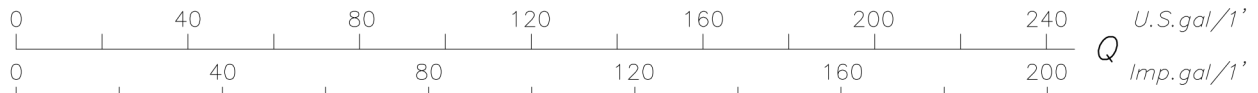


I DATI RIPORTATI SONO RIFERITI A :

Data refers to :  
 TEMPERATURA MAX. 30 °C - (86 °F) Max. Temperature  
 PESO SPECIFICO 1 Kg/dm<sup>3</sup> Specific gravity  
 VISCOSITA' 1 °E Viscosity



I DATI RIPORTATI SONO RIFERITI A :

Data refers to :  
 TEMPERATURA MAX. 30 °C - (86 °F) Max. Temperature  
 PESO SPECIFICO 1 Kg/dm<sup>3</sup> Specific gravity  
 VISCOSITA' 1 °E Viscosity

