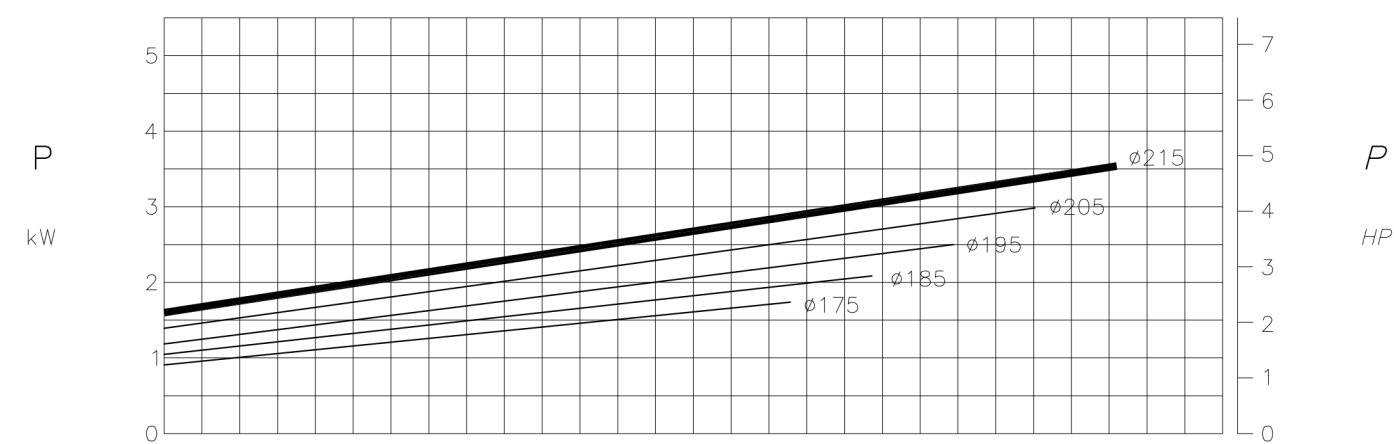
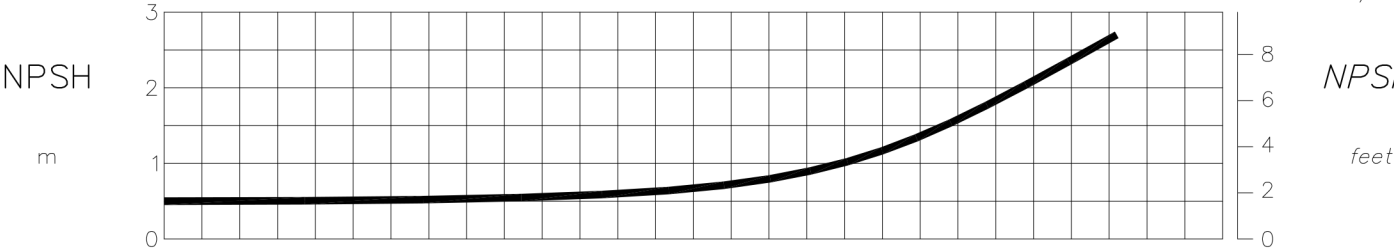
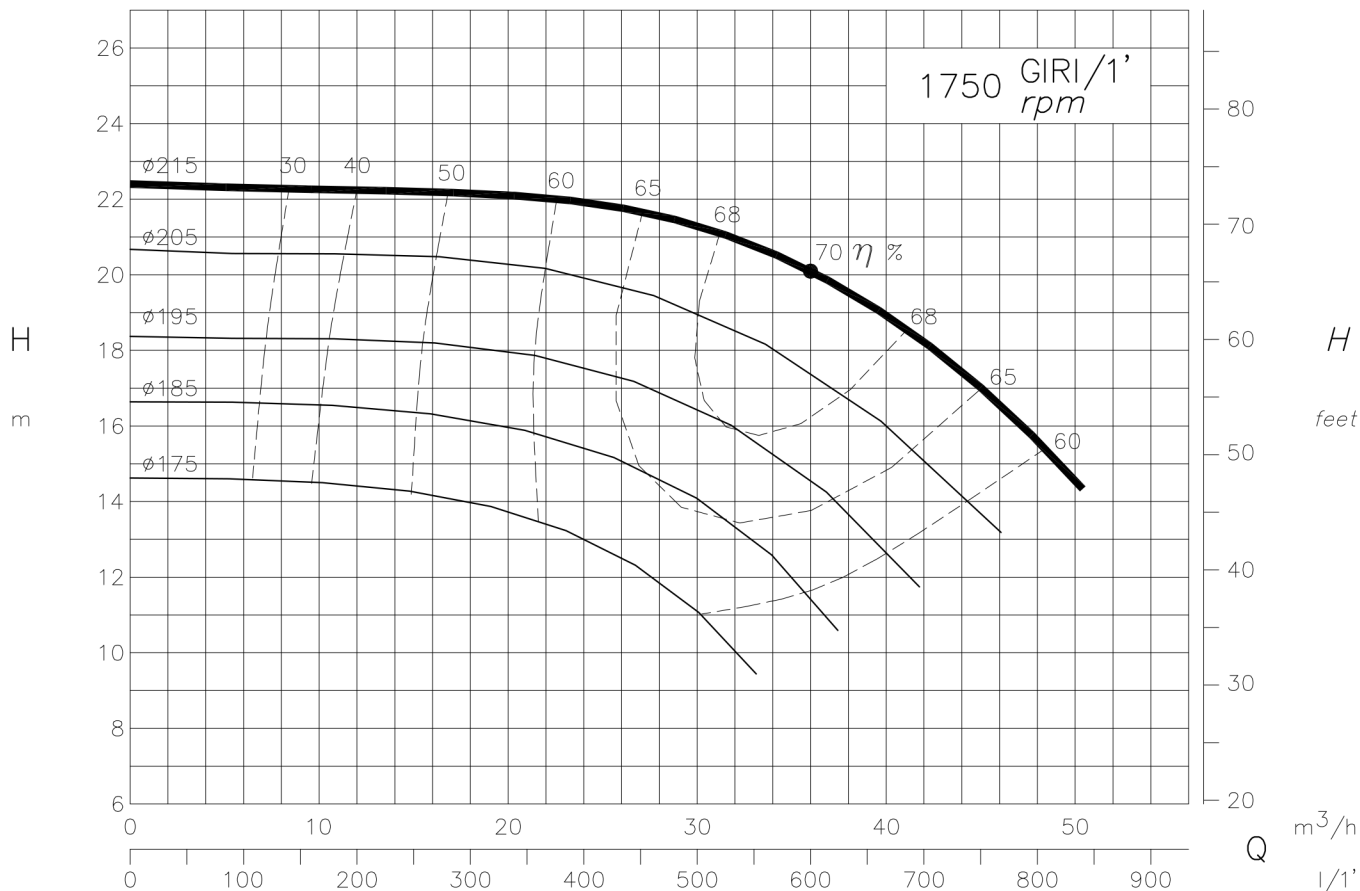
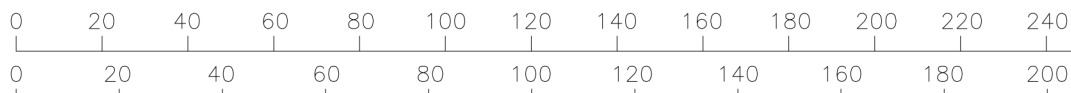




I DATI RIPORTATI SONO RIFERITI A :

Data refers to :

TEMPERATURA MAX. 30 °C - (86 °F) Max. Temperature
PESO SPECIFICO 1 Kg/dm³ Specific gravity
VISCOSITA' 1 °E Viscosity



I DATI RIPORTATI SONO RIFERITI A :

Data refers to :
 TEMPERATURA MAX. 30 °C - (86 °F) Max. Temperature
 PESO SPECIFICO 1 Kg/dm³ Specific gravity
 VISCOSITA' 1 °E Viscosity

