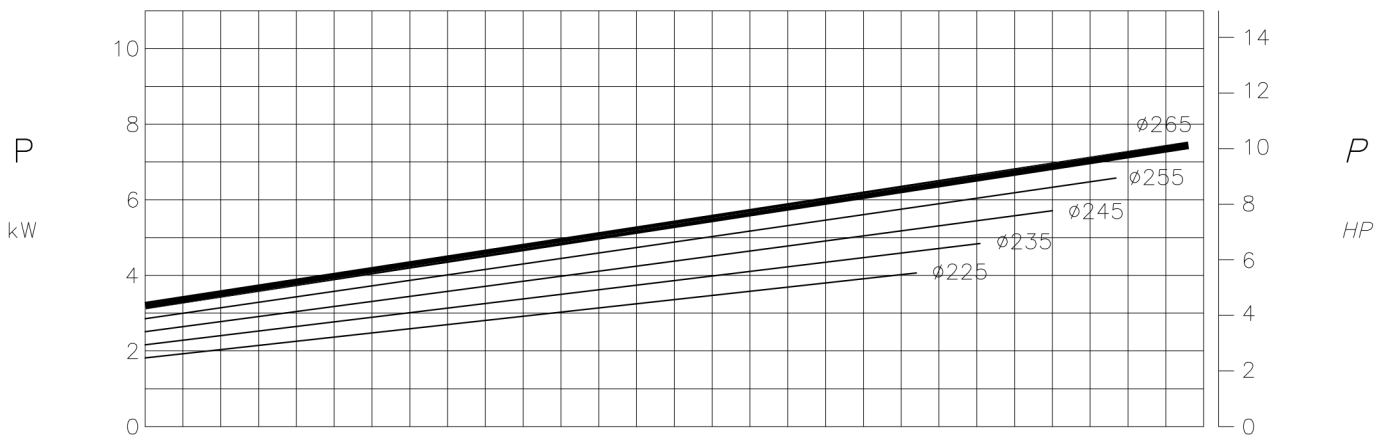
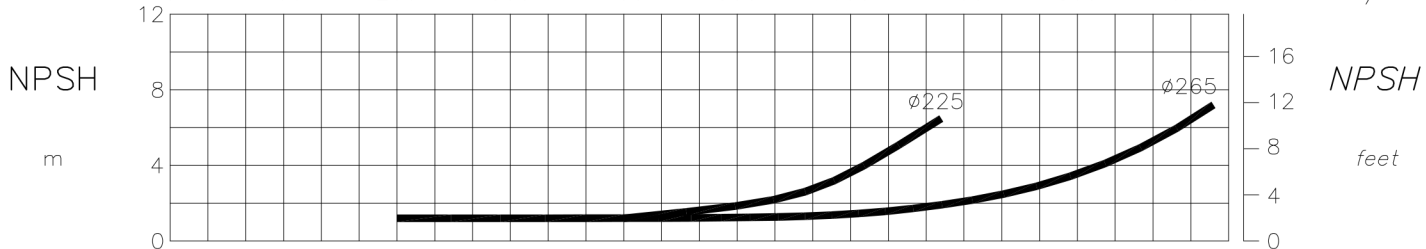
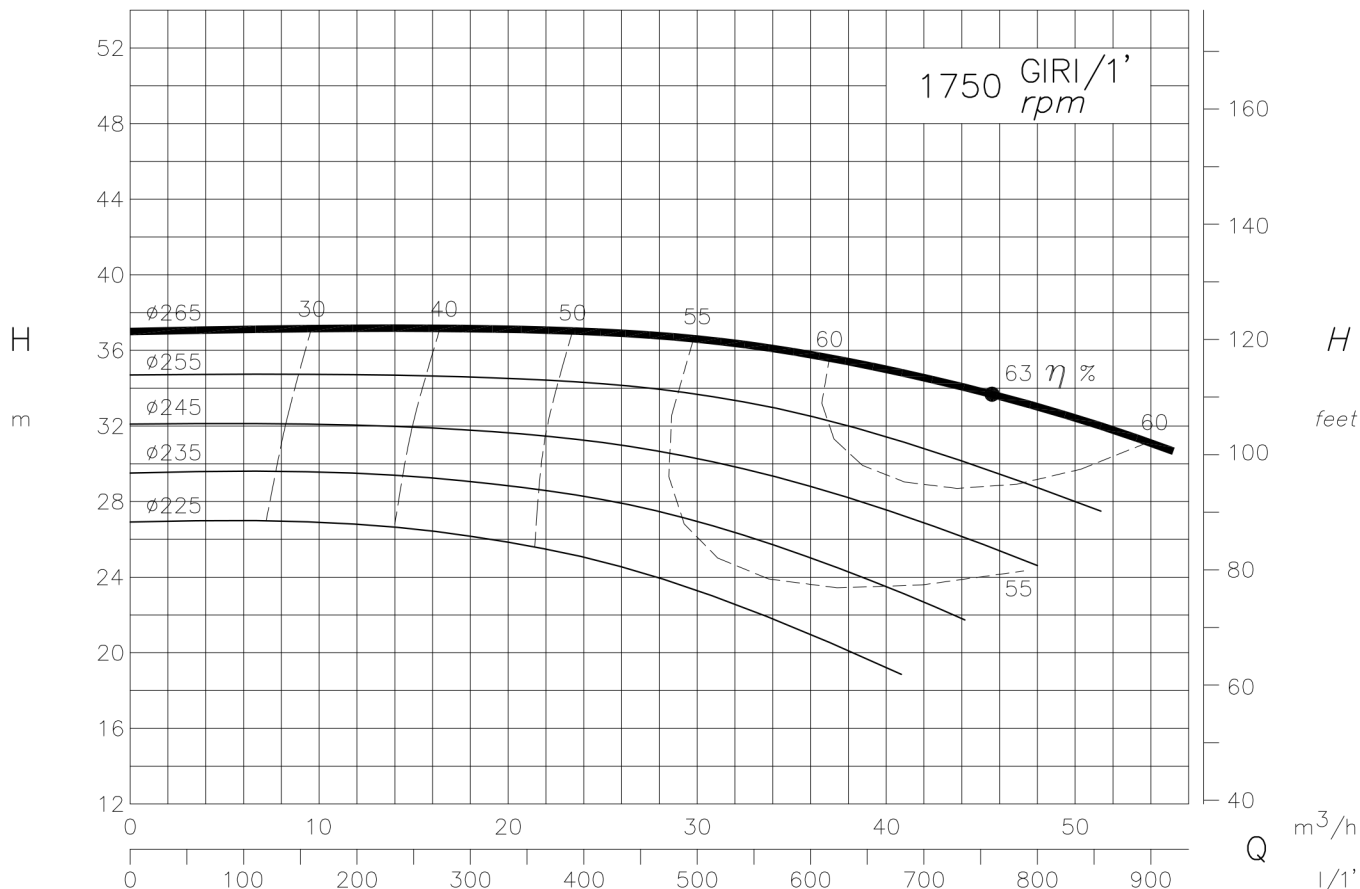
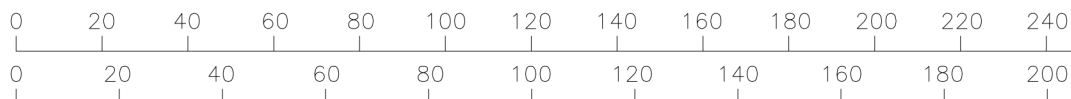


I DATI RIPORTATI SONO RIFERITI A :

Data refers to :

TEMPERATURA MAX.	30 °C - (86 °F)	Max. Temperature
PESO SPECIFICO	1 Kg/dm <sup>3</sup>	Specific gravity
VISCOSITA'	1 °E	Viscosity



I DATI RIPORTATI SONO RIFERITI A :

Data refers to :  
 TEMPERATURA MAX. 30 °C - (86 °F) Max. Temperature  
 PESO SPECIFICO 1 Kg/dm<sup>3</sup> Specific gravity  
 VISCOSITA' 1 °E Viscosity

